

Practical Training of Business Continuity Plan (BCP)

Kentaro Tsuboi

JMA Workshop on WIS implementation

18-20 November 2014

Agenda

- Review Lessons
 - Necessity of Business Continuity Plan(BCP)
 - AMDCN
 - WIS portal
 - GISC backup
- Practical Training
 - STEP 1 Make current network diagram
 - STEP 2 Case1: Principal GISC/RTH failure
 - STEP 3 Case2: Message Switching System failure
- Summary
- Q&A

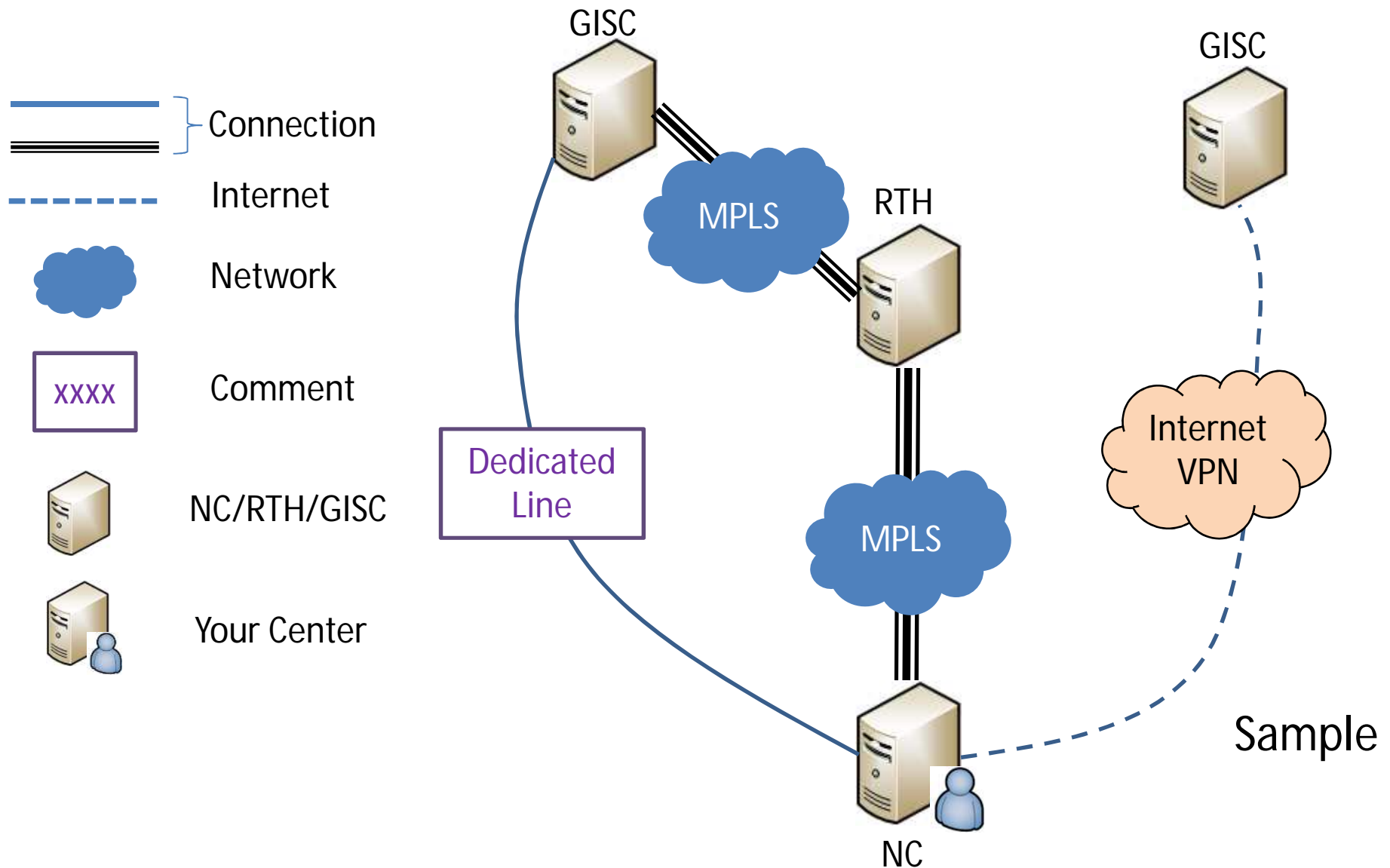
Review Lessons

- Necessity of Business Continuity Plan(BCP)
 - Lesson 4 Introduction of Backup Concept
 - Lesson 5 Introduction to Back up
- AMDCN
 - MPLS
 - Internet-VPN
 - Lesson 3 Introduction to AMDCN
- WIS portal
 - Data Subscription
 - Lesson 6 Training of data collection from GISC Tokyo
 - File Upload
 - Lesson 7 Training of uploading data to GISC Tokyo
- GISC backup
 - GISC Offenbach, GISC Beijing, ...
 - Lesson 8 GISC Backup – Live demonstration

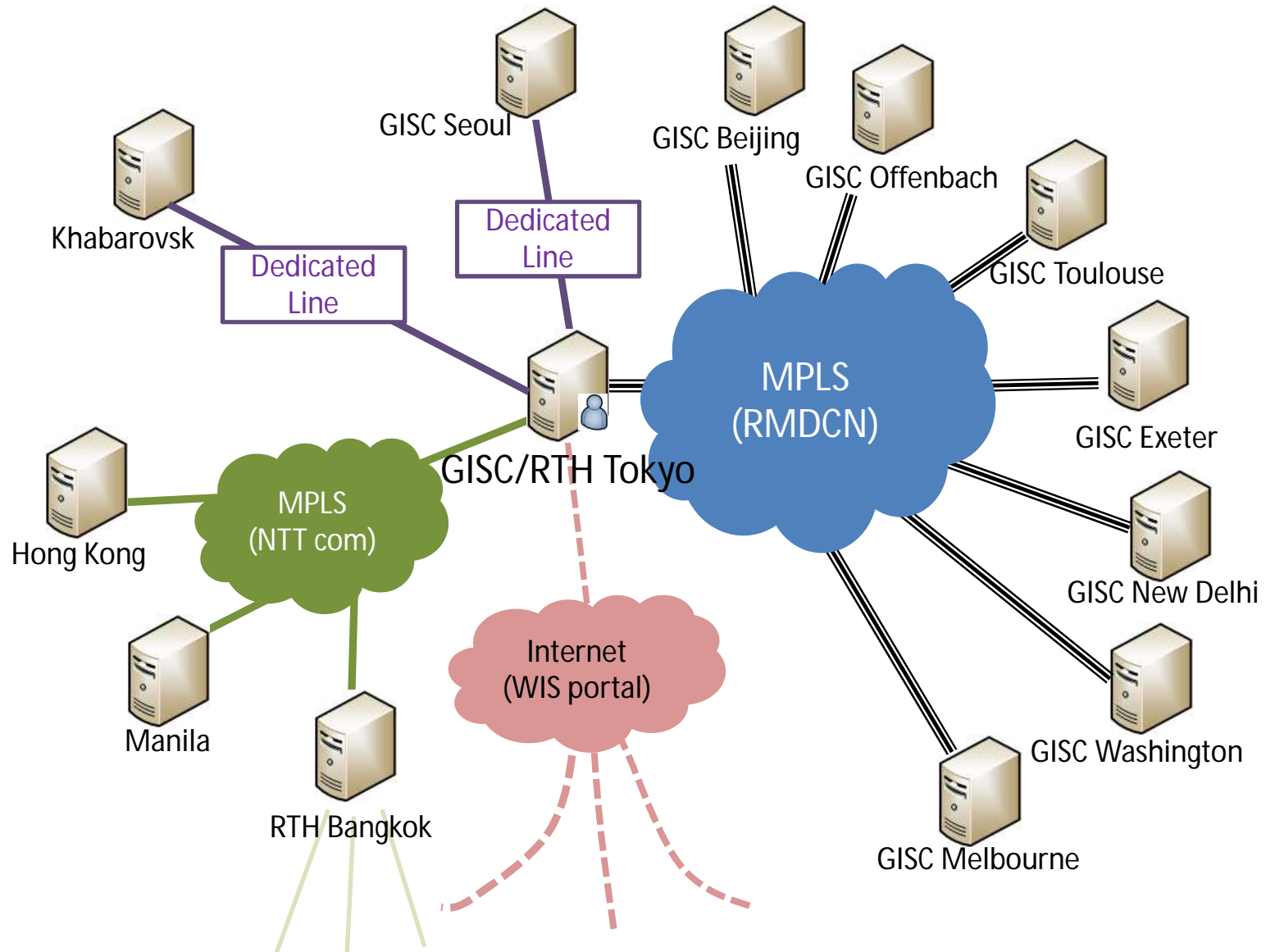
Practical Training

- STEP 1
 - Make current network diagram
- STEP 2
 - Case 1 : Principal GISC/RTH failure
 - Check the data flow
 - Try to make plans of BCP
- STEP 3
 - Case 2 : Message Switching System failure
 - Check the data flow
 - Try to make plans of BCP

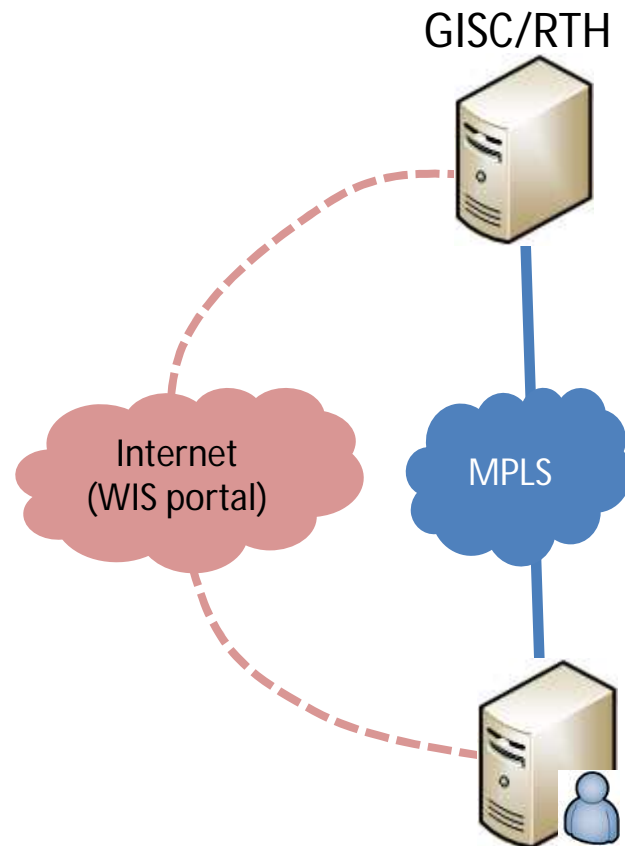
STEP 1 Make current network diagram



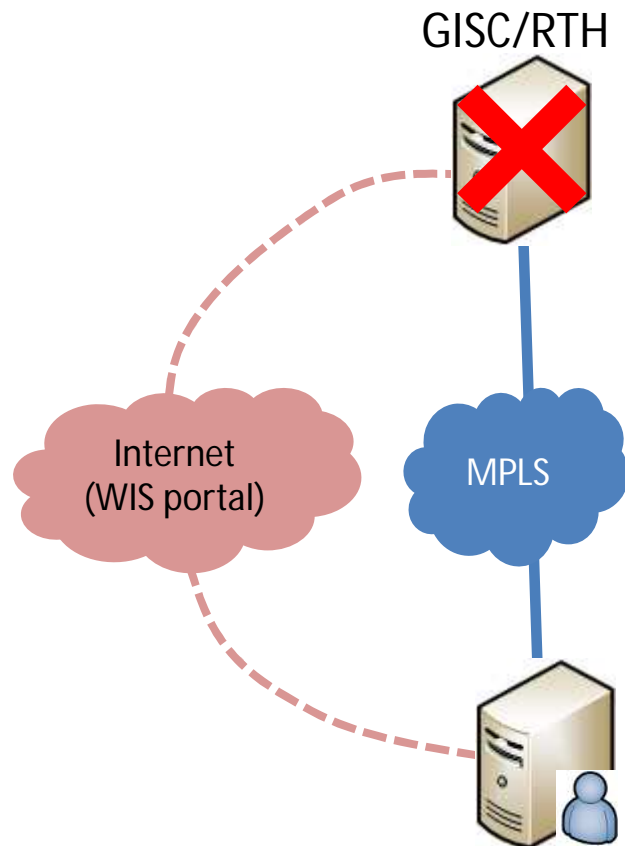
Example: Tokyo network diagram



Example: Simplified version



STEP 2 Case1: Principal GISC/RTH failure

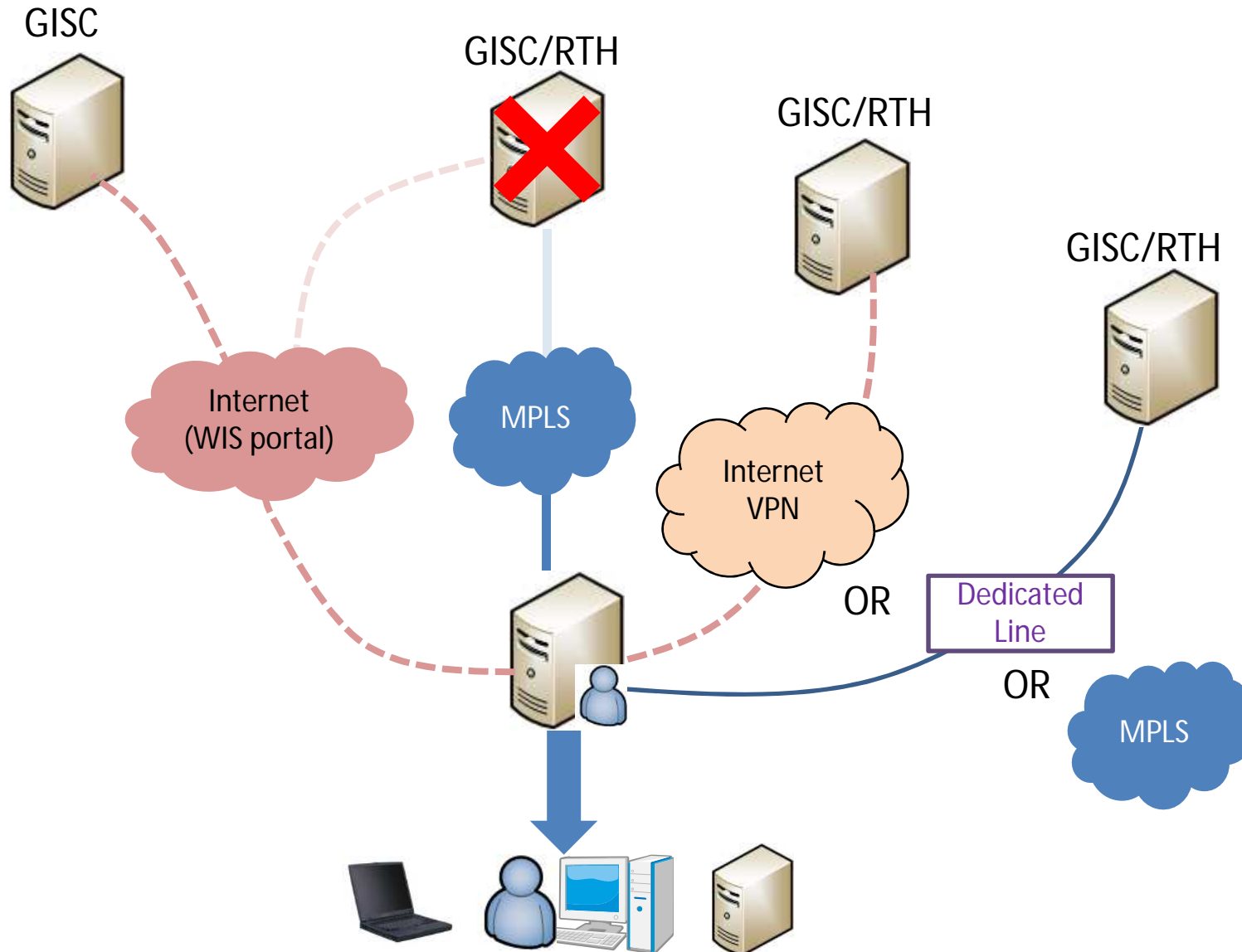


How do you get/send data?

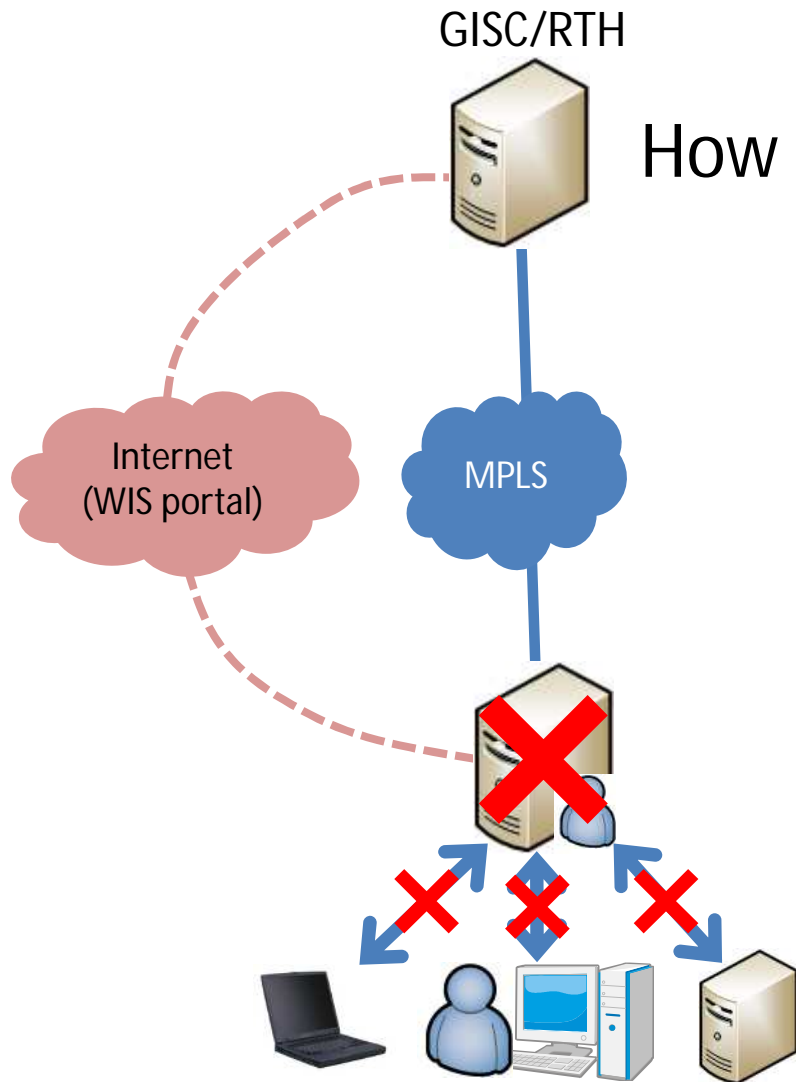
- Observation
- Warnings
- GPV
- Satellite images
- ...

Try to make plans of BCP

STEP 2 Case1: Principal GISC/RTH failure



STEP 3 Case2: Message Switching System failure

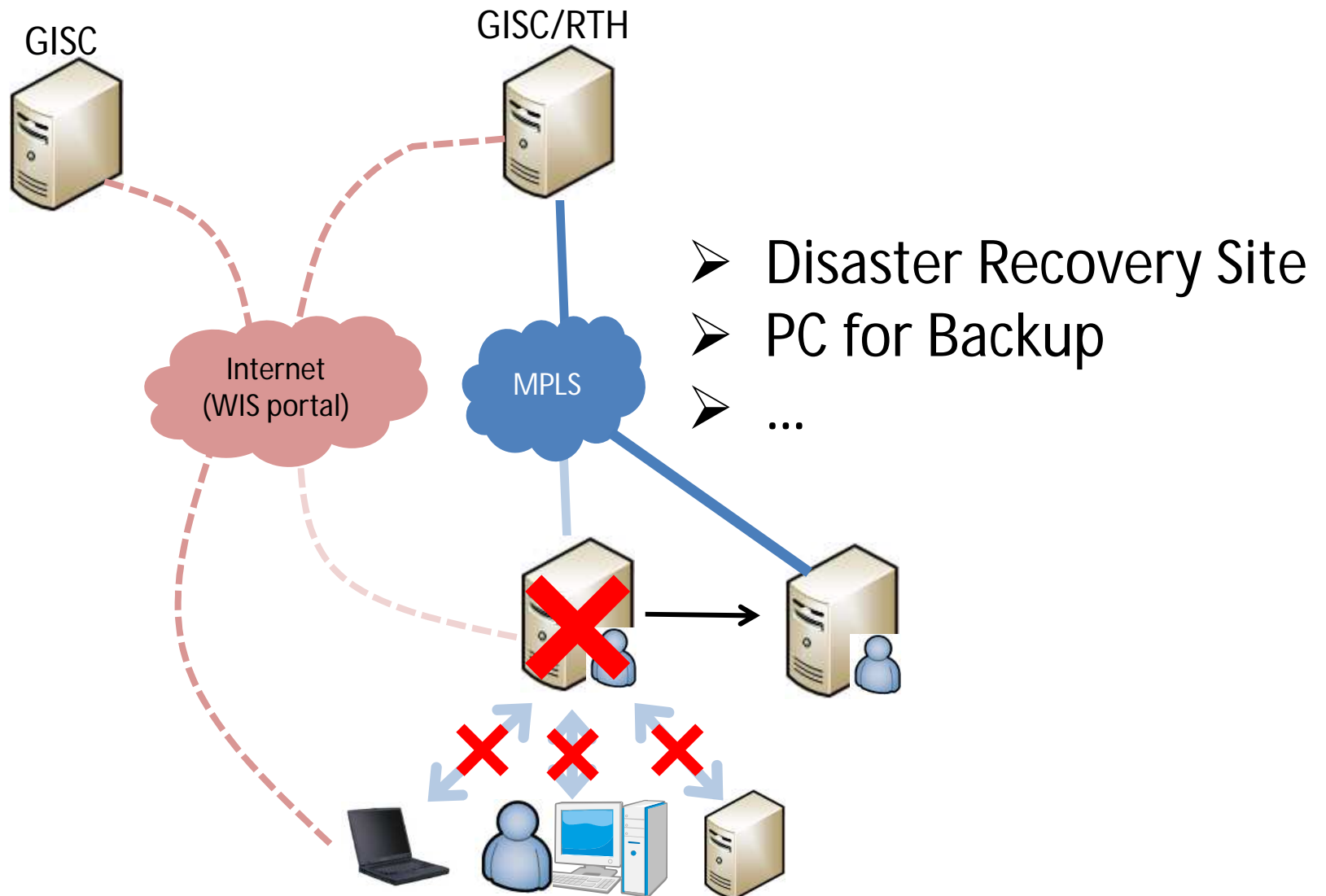


How do you continue the critical work ?

- Warnings
- Forecast
- Observation
- ...

Try to make plans of BCP

STEP 3 Case2: Message Switching System failure



Summary

- Prepare for the various failure case
- The most important thing is how to continue the critical work in your country
- There are effective options to get/send data
- Let's make plans of BCP in the future including ideas in this lecture

Q&A

Thank you

