



# Making BCP

Outcomes from all the lessons in the  
WIS workshop



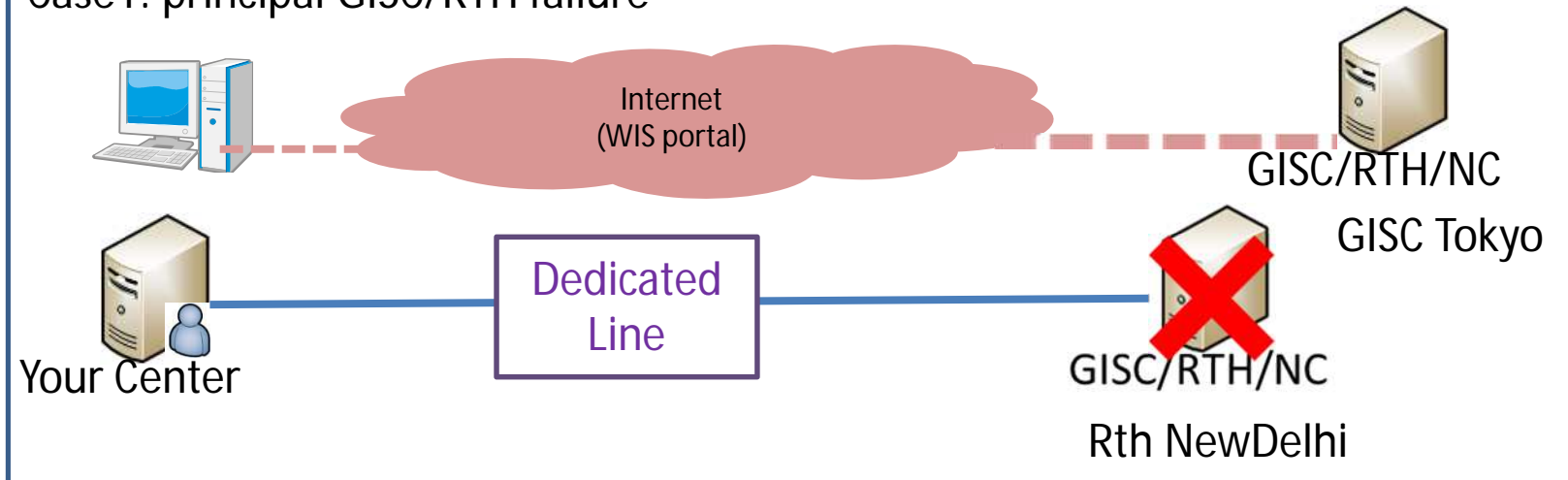
# Review the BCP plans

- Pick up 1 sheet by each country
- Review Case1: Principal GISC/RTH failure



# Bangladesh

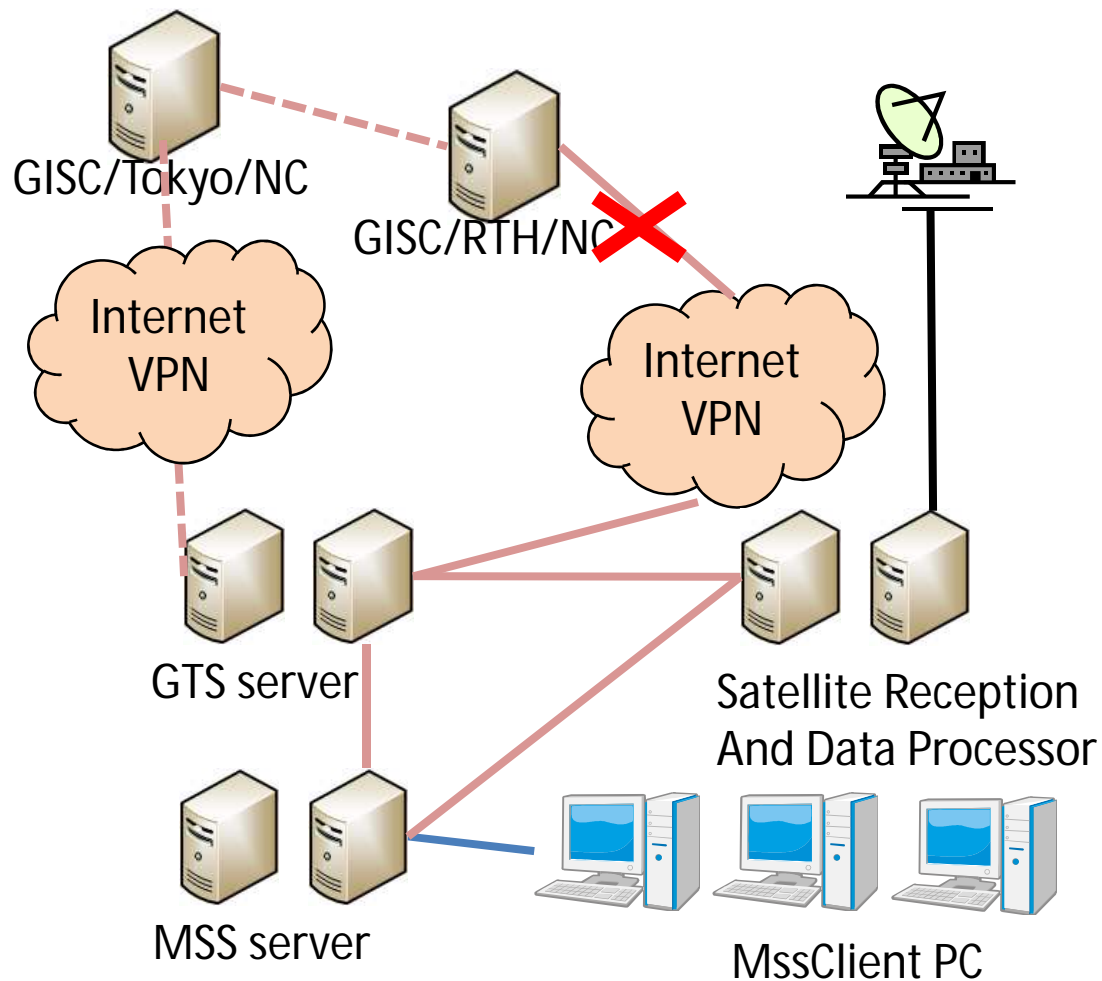
Case1: principal GISC/RTH failure



- If Bangladesh already has a PC and internet connection, they can establish a backup plan to download/upload data without additional equipment.
- Further consideration points are 1) PC performance, 2) how to deliver the data to forecasters
- May be your request is IPsec VPN....



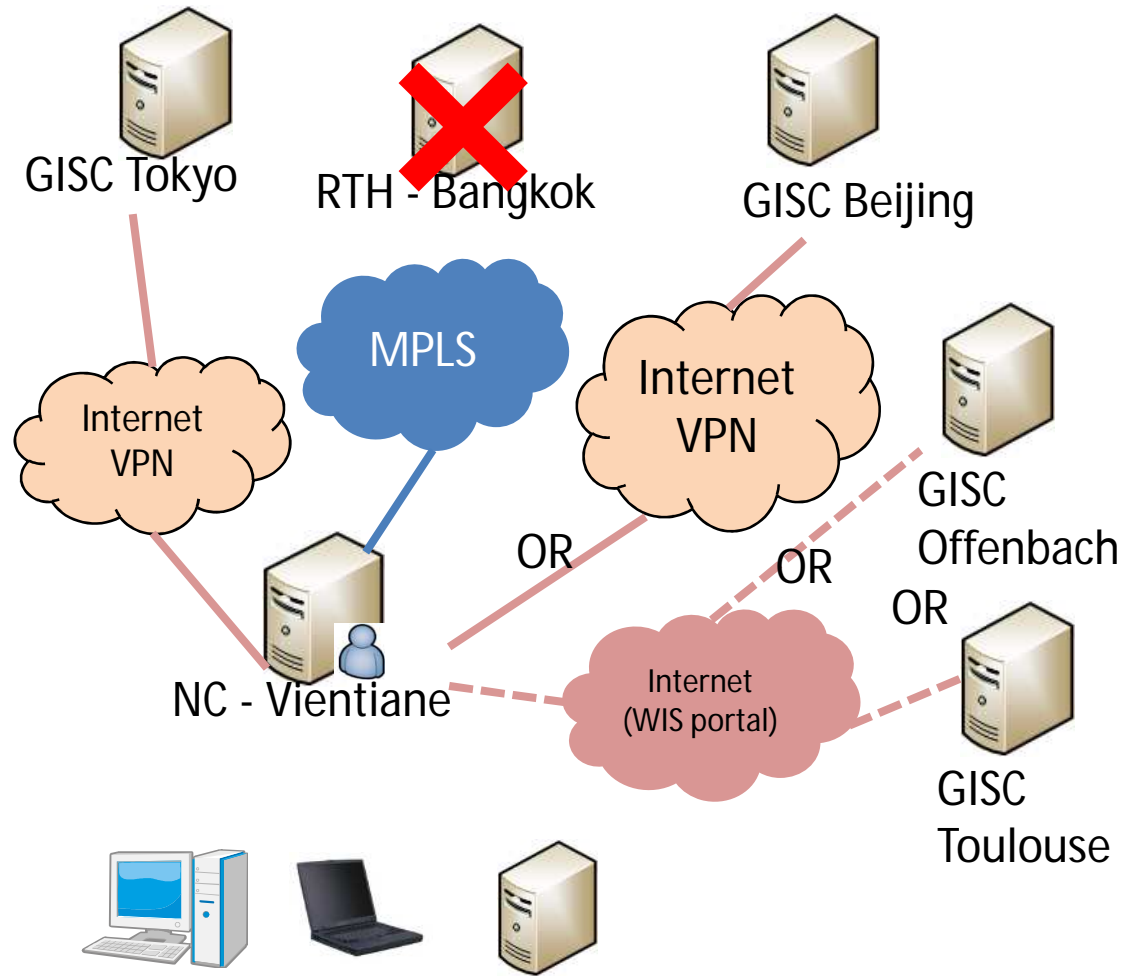
# Cambodia



- To establish a VPN link to Tokyo, Cambodia will need to modify the internet router and GTS server. But may not need additional equipment.
- Further consideration point is confirm if GTS server 1) has duplication check function, and 2) can send same data on both channels



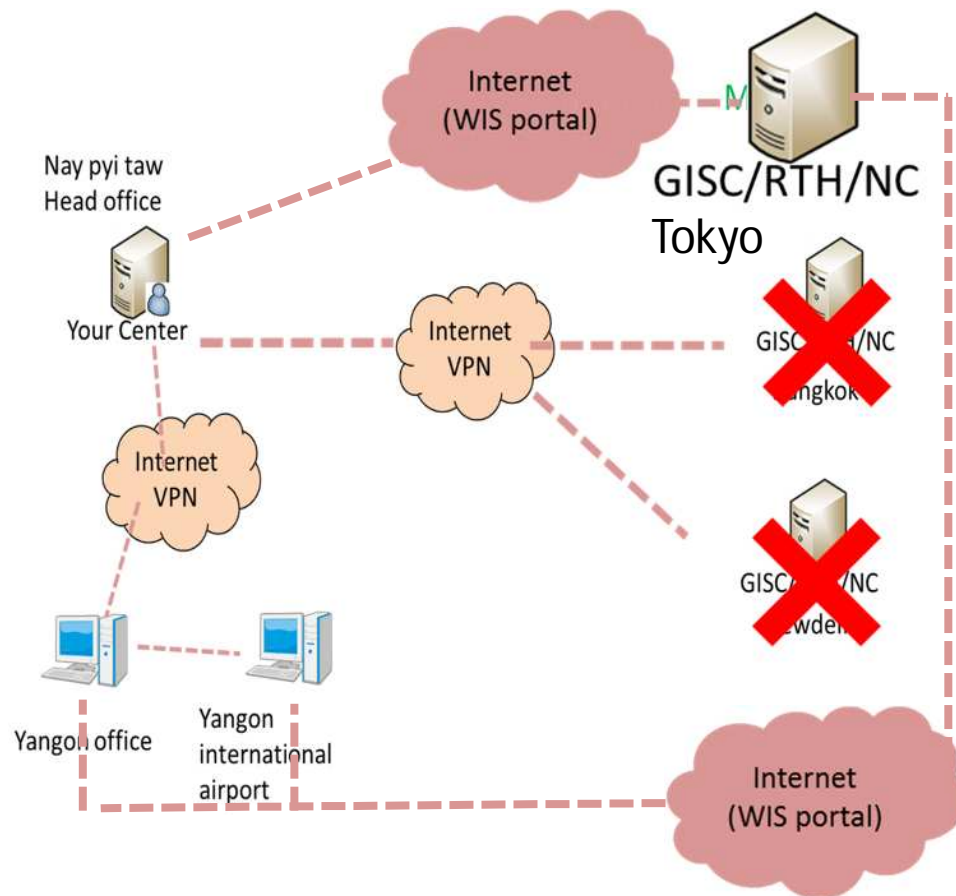
# Lao PDR



- If Vientiane already has VPN facility, will need to modify configuration on router and GTS server to establish a VPN link to Tokyo
- Further consideration point is how to manage backup operation. 1) always send/receive data on both main link and backup link, 2) switch operation



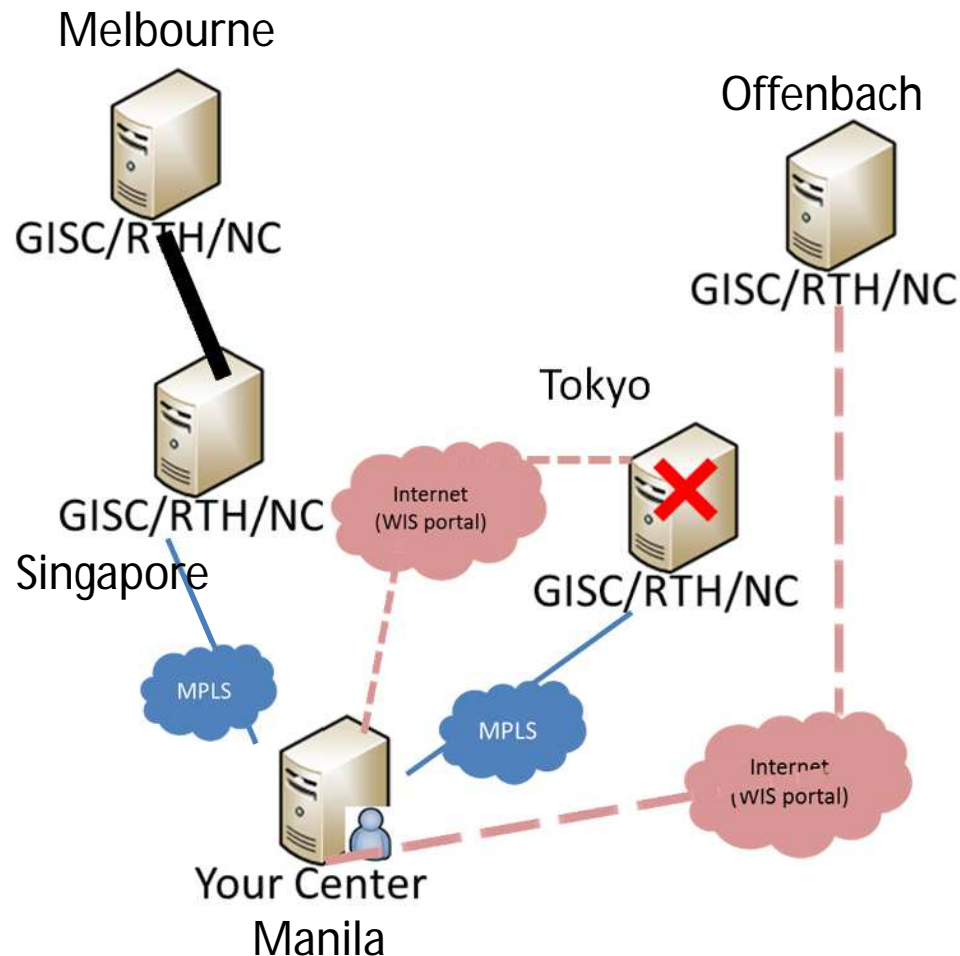
# Myanmar



- In this BCP plan, Myanmar need to install subscription and upload application on your GTS system at Nay Pyi Taw.
- Considering point is how to forward WIS portal data from Yangon to Ney Pyi Taw
- May be Ney Pyi Taw request is IPsec VPN to Tokyo.



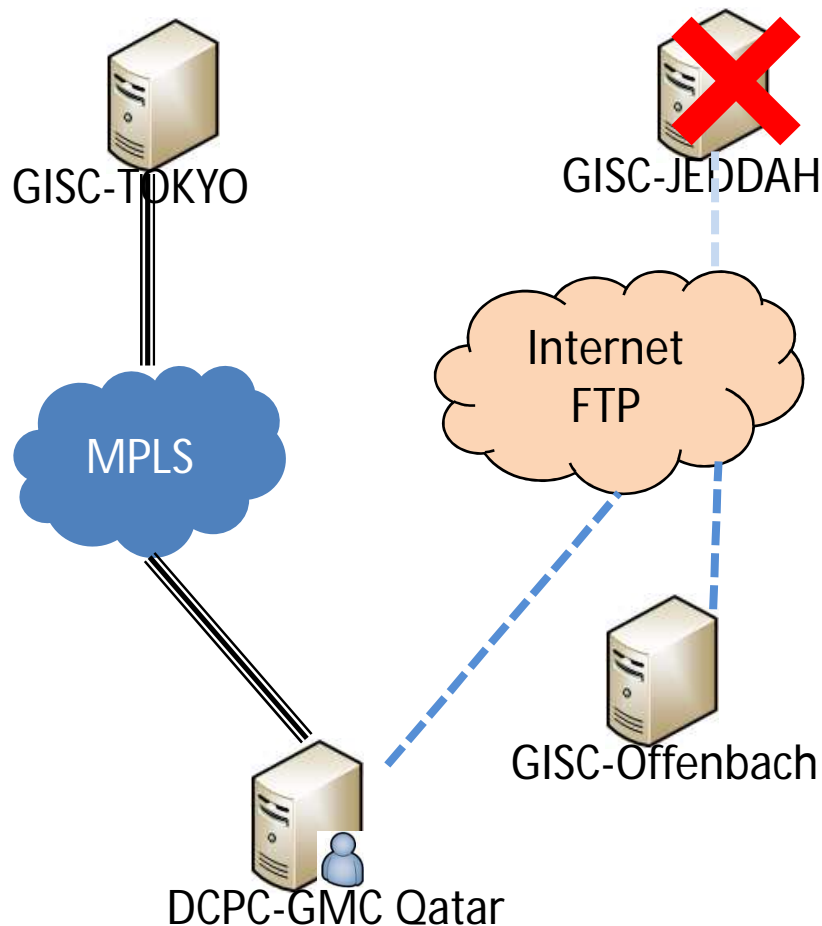
# Philippines



- Manila already has two MPLS links.
- If the GTS system doesn't have internet connection Manila needs install internet facilities (Firewall, network and equipment)
- Further consideration point is 1) which data must be backed up from Singapore, 2) estimate data volume and bandwidth



# Qatar

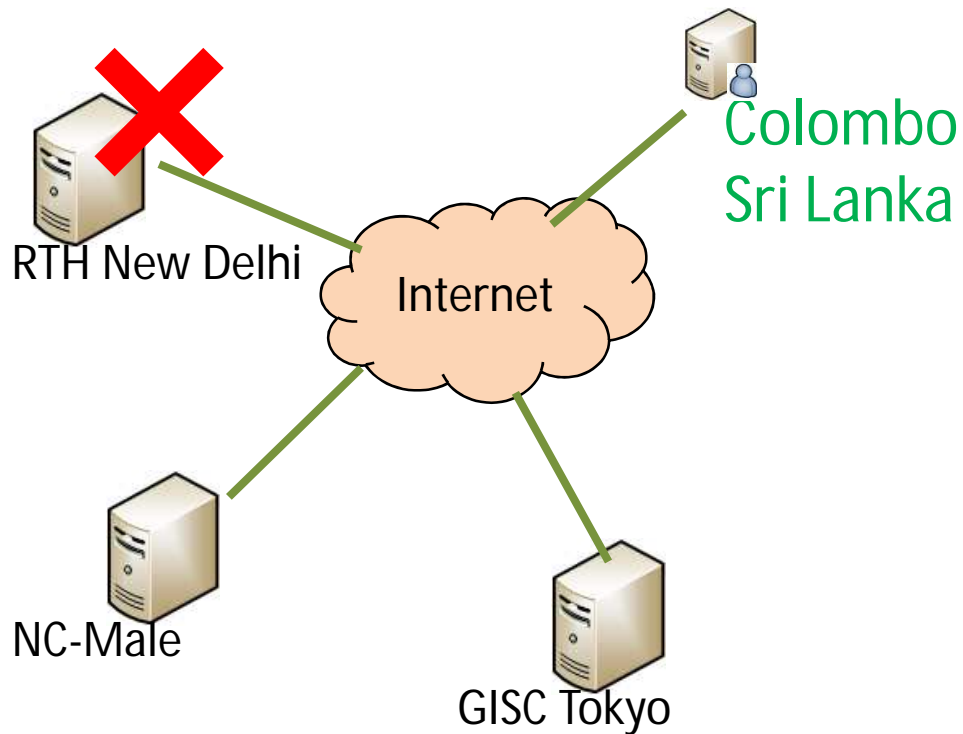


- To establish a new MPLS link, should consider contract and operational cost.
- Establishing MPLS connection is on going
- Start making arrangement about exchanging data





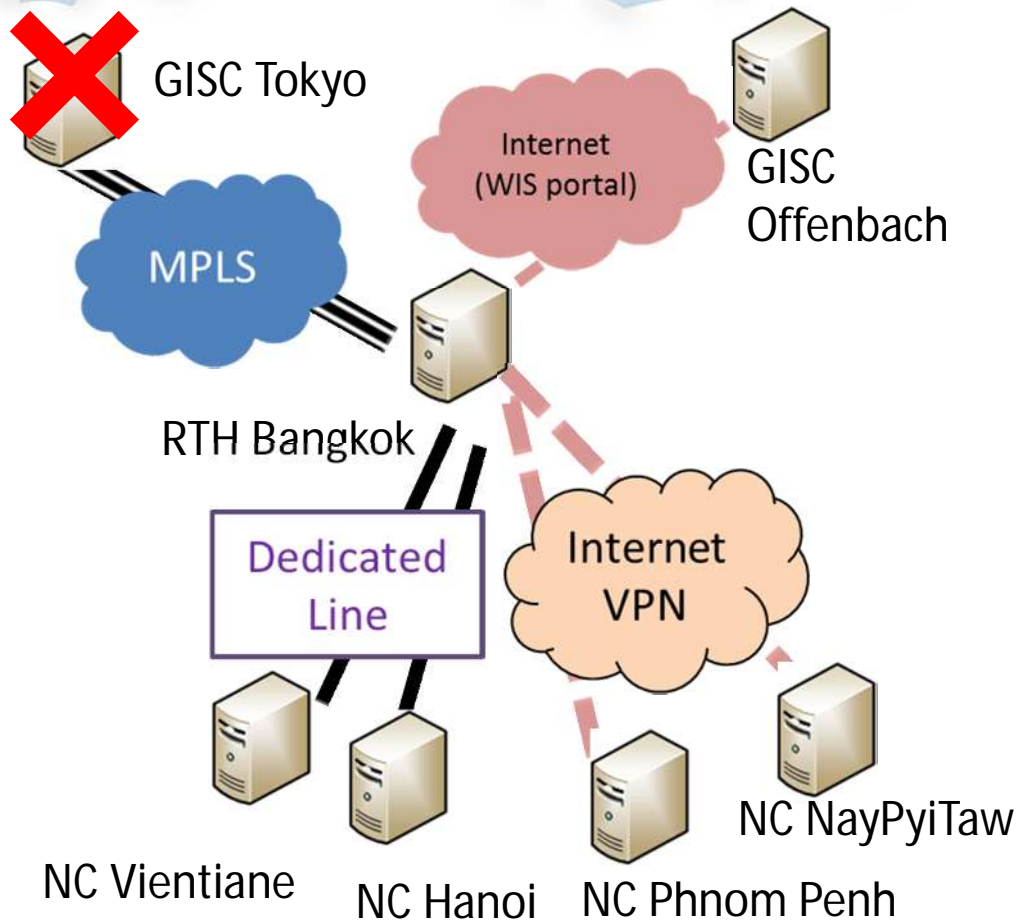
# Sri Lanka



- If Colombo already has VPN facility, will need to modify configuration on router and GTS server to establish a VPN link to Tokyo without additional equipment
- Further consideration point is which data must be backed up



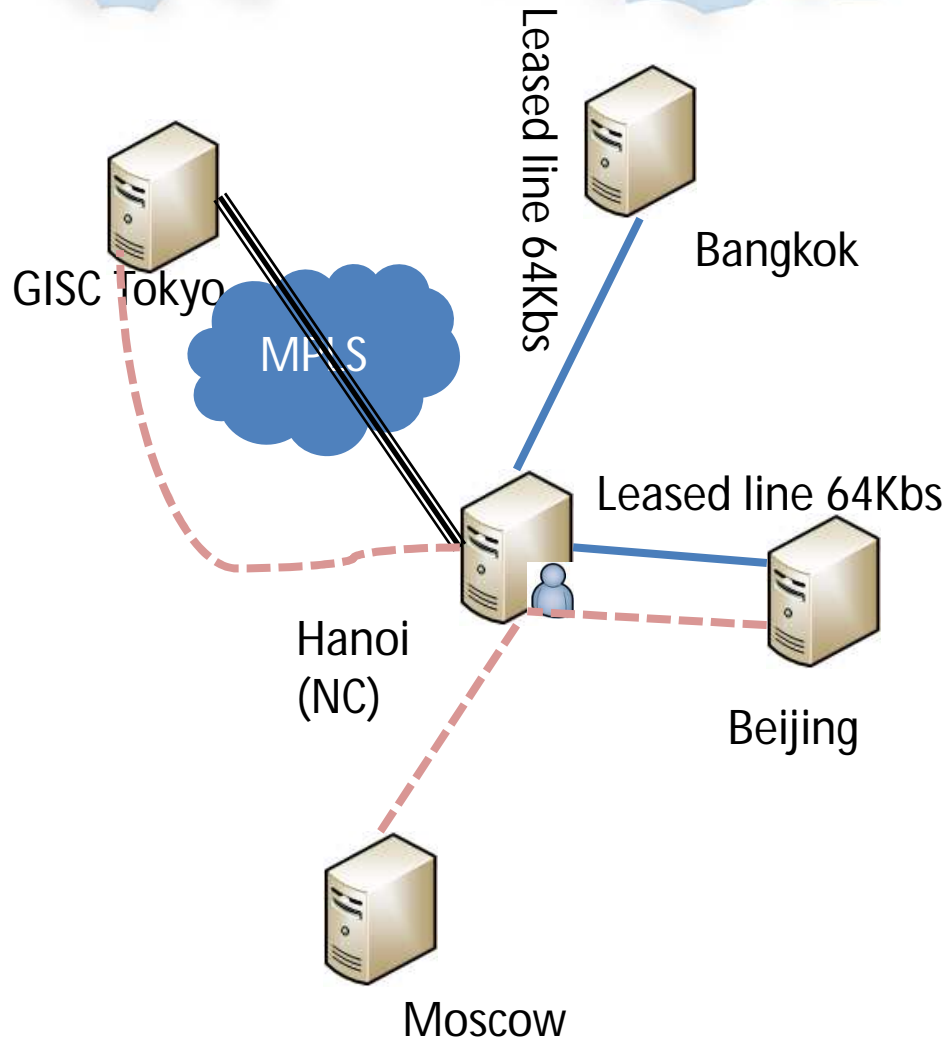
# Thailand



- Already operated backup arrangements
- Future consideration point is seeking requirements from NCs and to meet their needs



# Vietnam



- To establish a new MPLS link, should consider contract and operational cost.
- Already started discussion about establishing a MPLS link to Tokyo
- Future consideration point is estimate data volume and bandwidth





# Summary

- User requirement is a most impotent item to start consideration of BCP
- Cost balance should be considered. Which backup plan is affordable to meet requirement
- The time window of Lesson 9 was not enough. Please stat discussion about BCP with your colleagues





# Thank you for your attention

