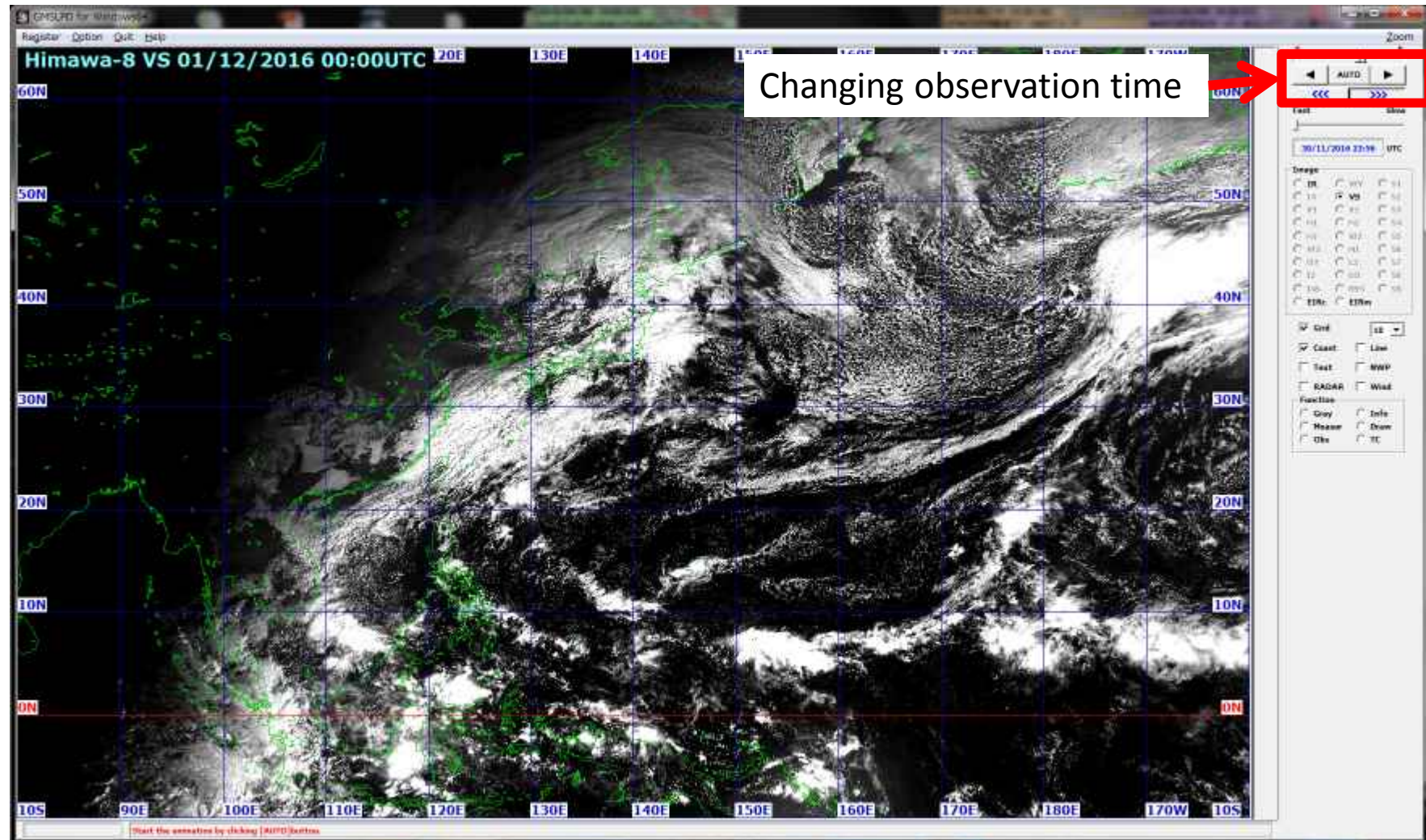


0. How to use SATAID?



0. How to use SATAID?



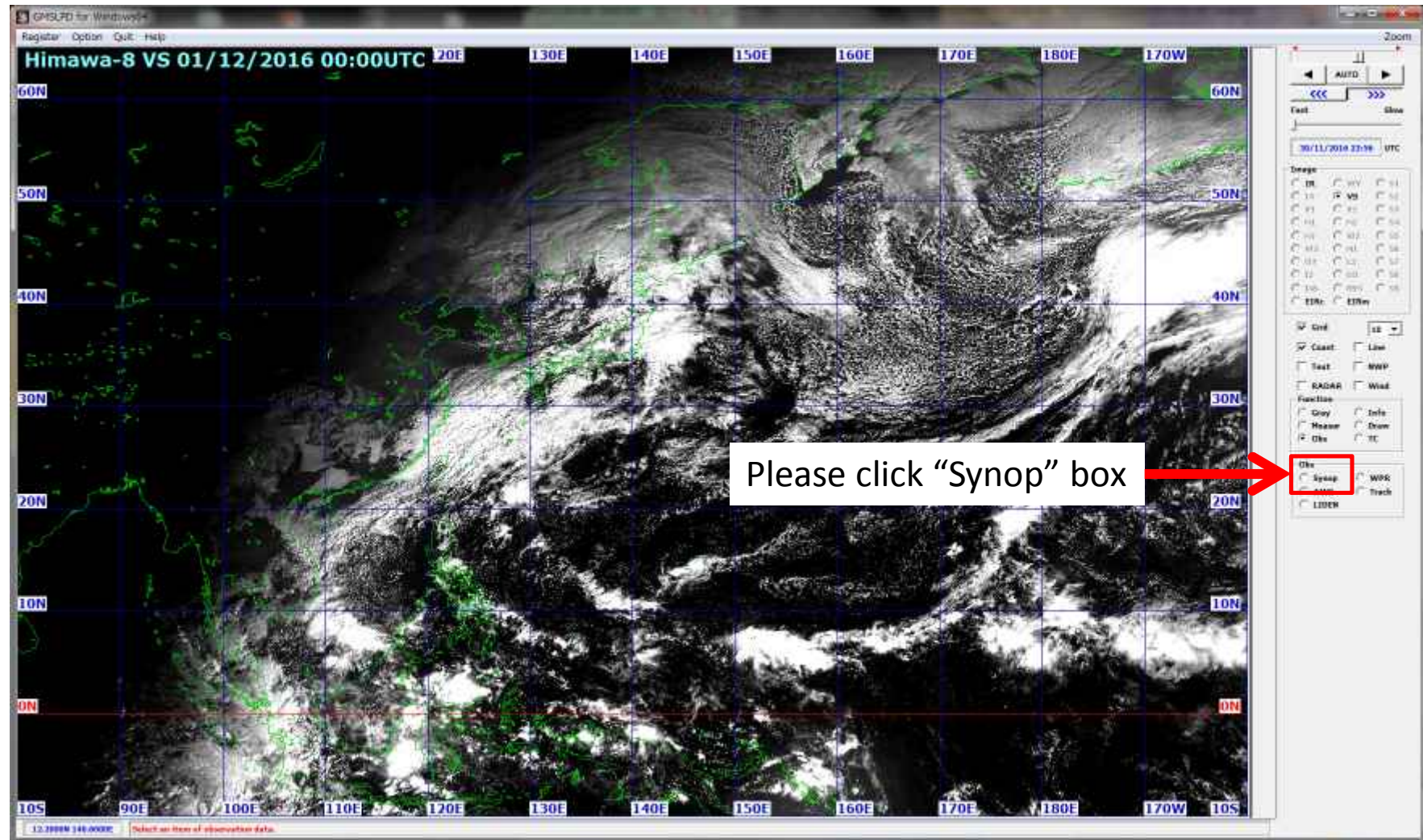
0. How to use SATAID?



1. Display of Surface Observation



1. Display of Surface Observation



1. Display of Surface Observation

The screenshot shows the GMSLFD software interface. The main window displays a satellite image of a storm system over the Pacific Ocean, with a grid overlay. The title bar reads "Himawa-8 VS 01/12/2016 00:00UTC". The interface includes a menu bar (Register, Option, GUI, Help), a toolbar with navigation controls, and a right-hand panel with various data options. A "Synop data" dialog box is open in the foreground, with the "Surf" radio button selected and the "Close" button highlighted. Red arrows point from text boxes to these elements.

Please DO NOT click "close" button.

Please click "surf" box.

Synop data

Surf 1000 1000

925 850

700 500

400 300

250 200

150 100

Cond

Path:

Close

Vert

Temp

Pote

Wind

Stab

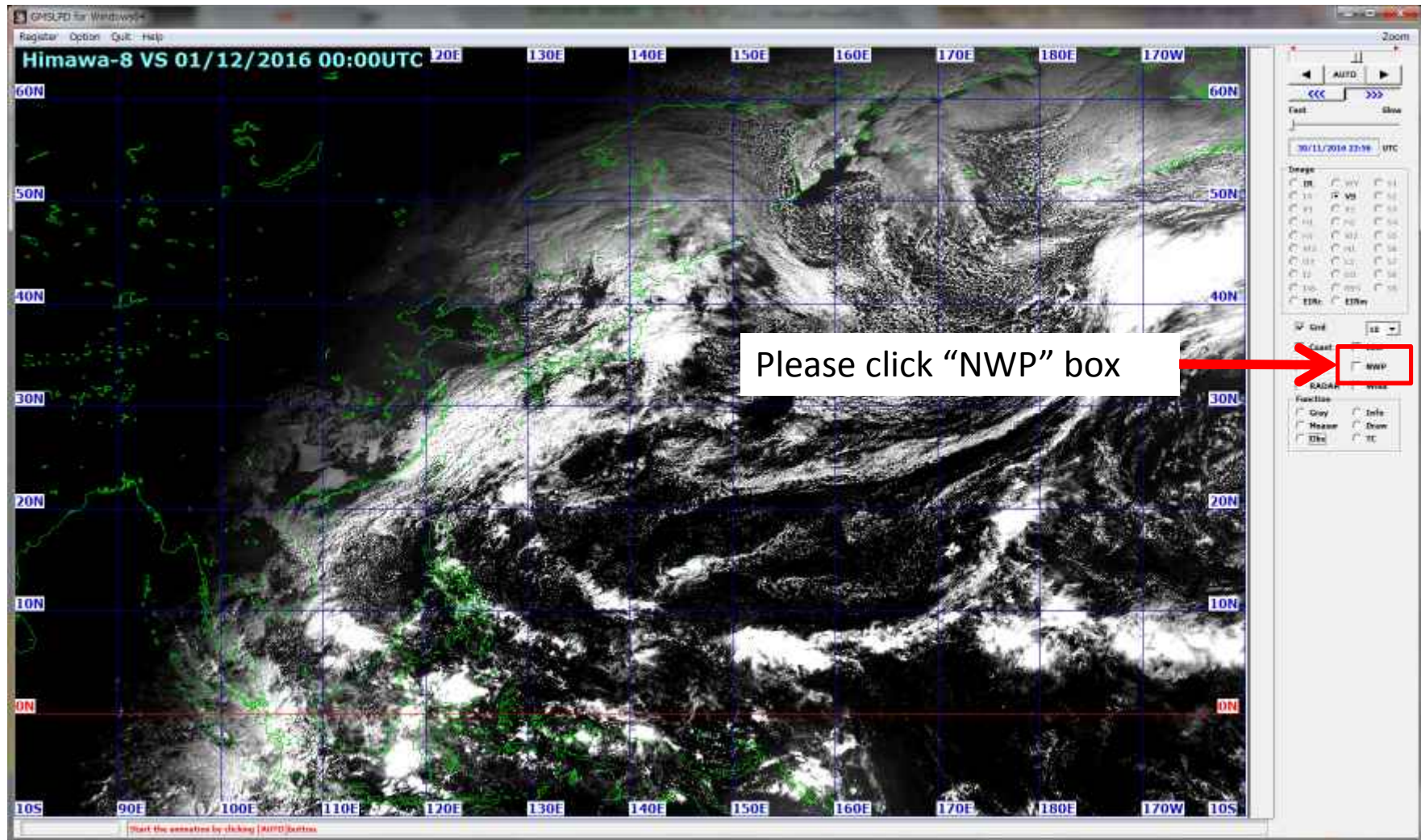
2. Display of Upper Air data



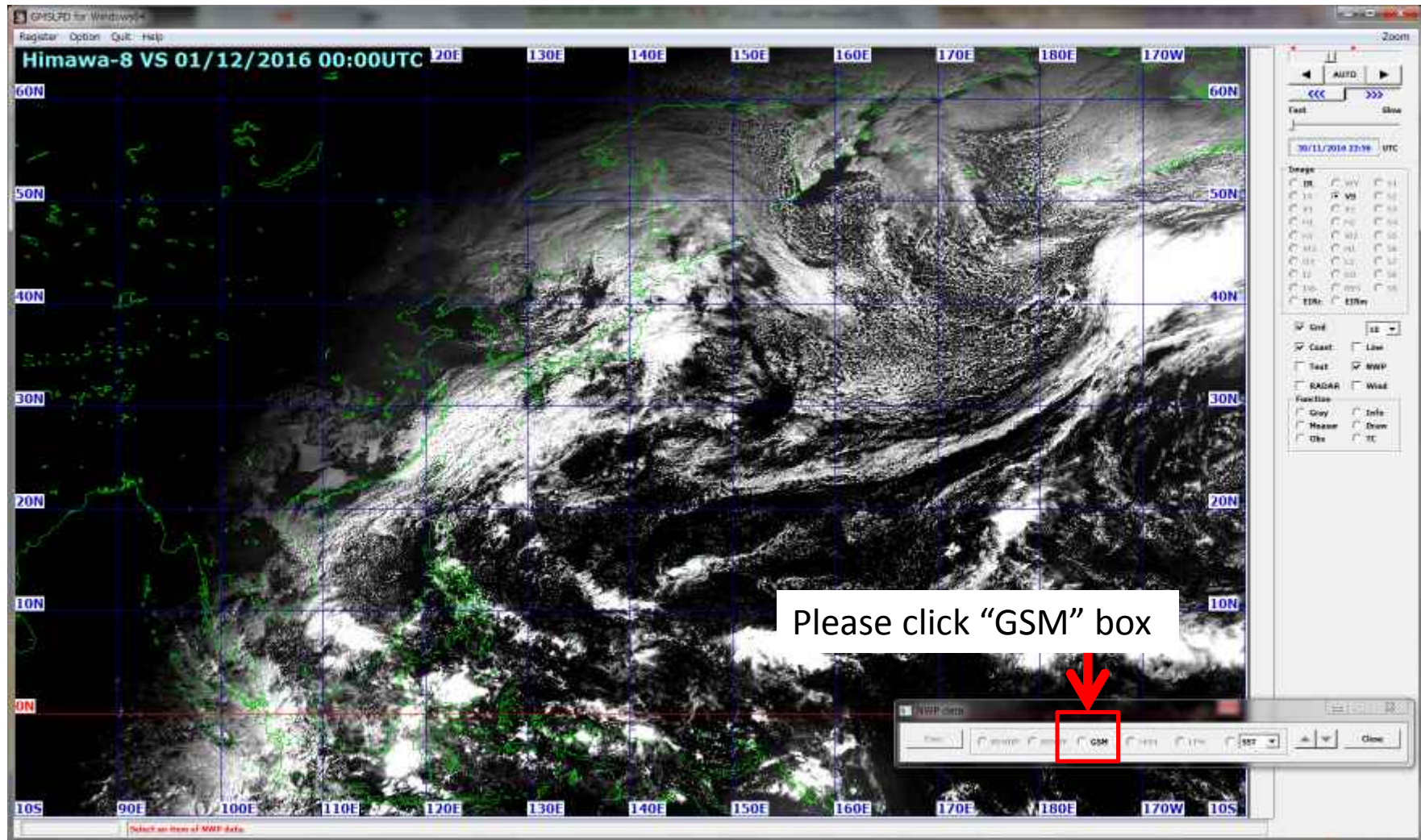
3. Display of NWP data



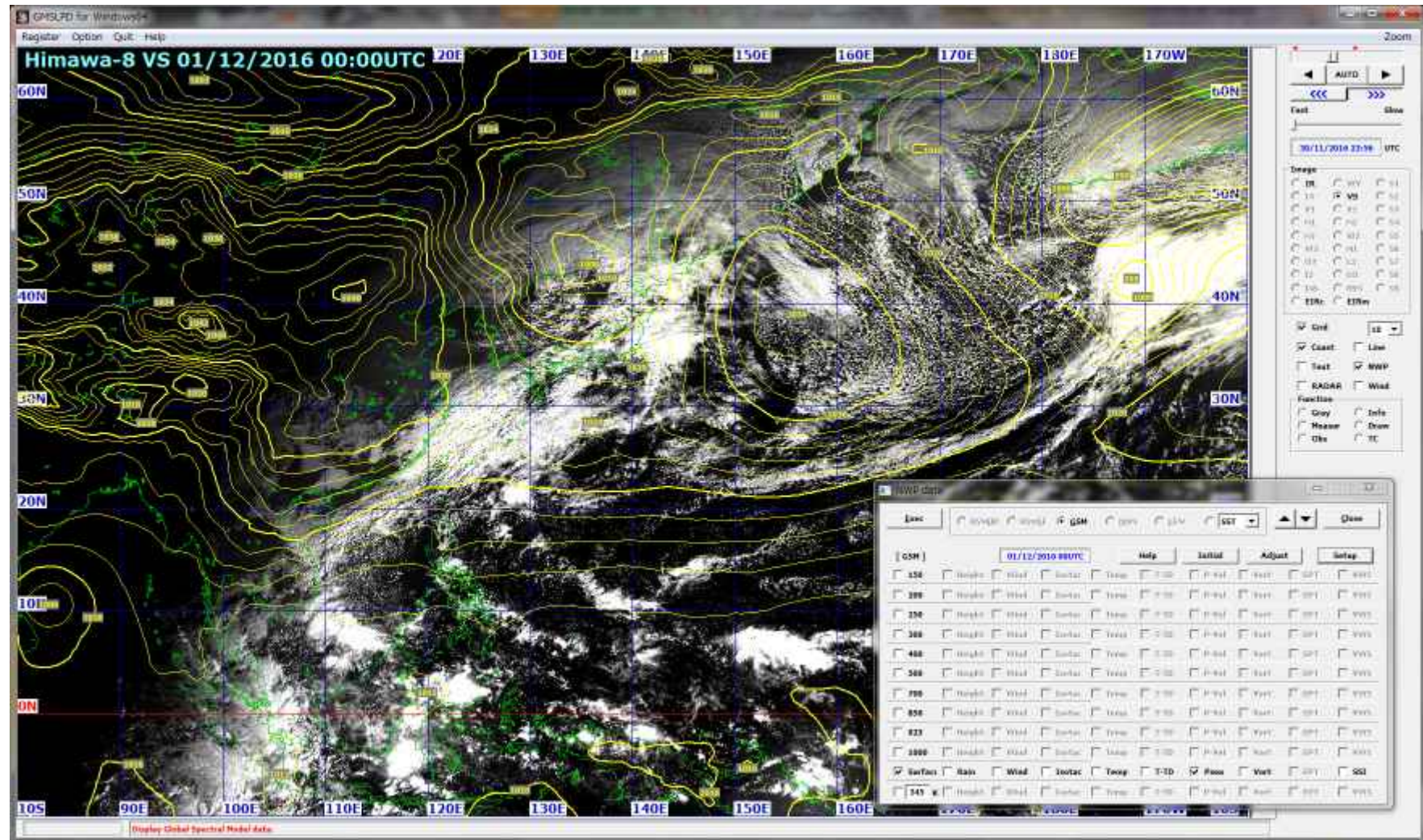
3. Display of NWP data



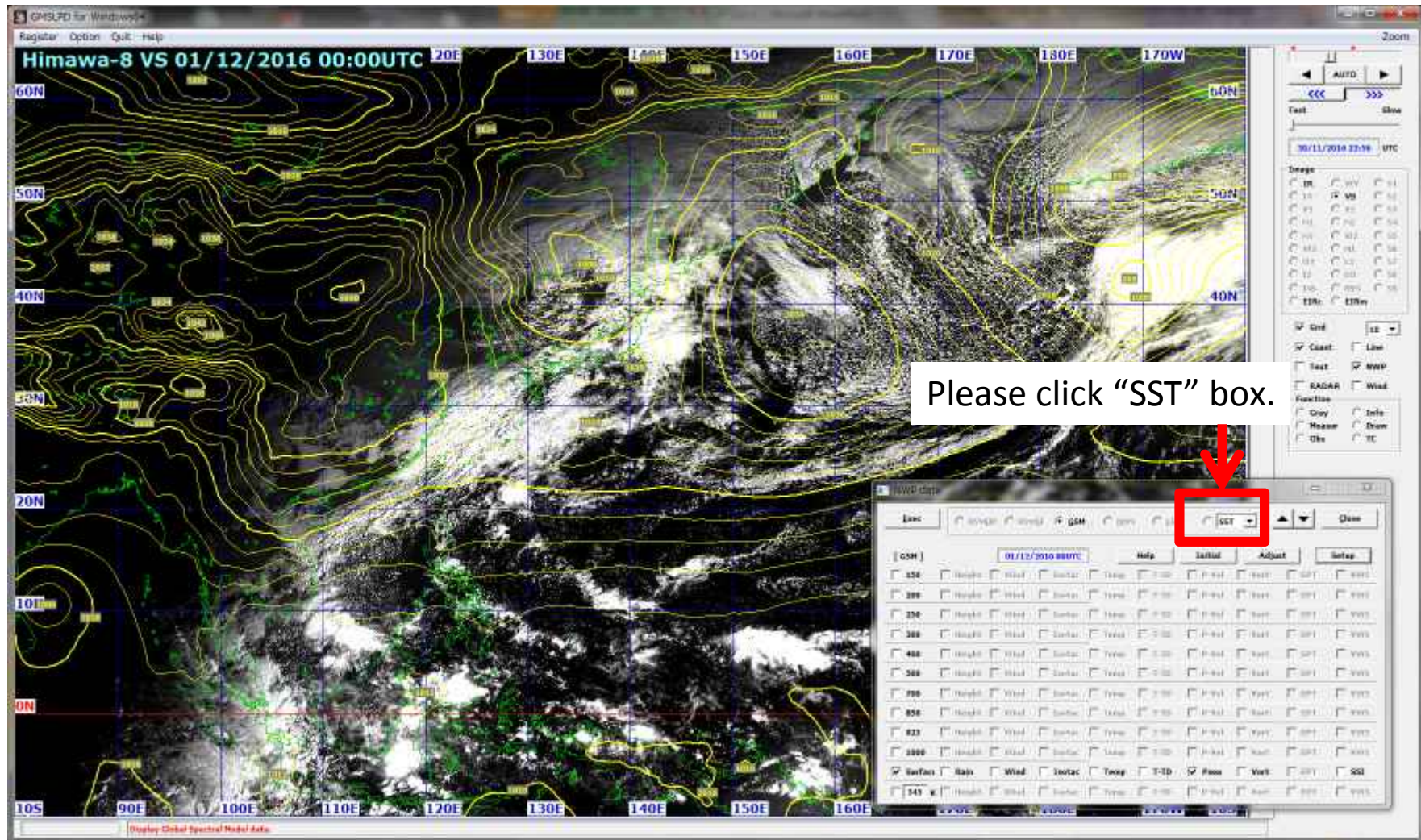
3. Display of NWP data



3. Display of NWP data



4. Display of SST



4. Display of SST

