

# Radar data exchange in South East Asia

Kentaro Tsuboi

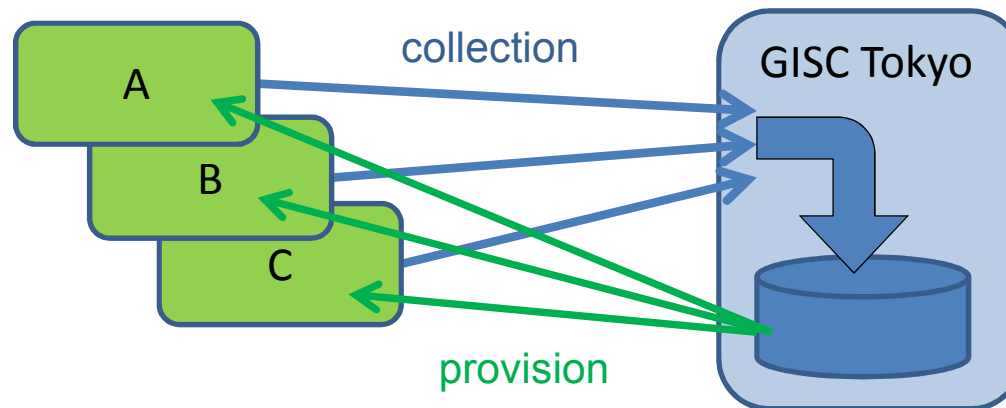
Information and Communications Technology Division

JMA Workshop on the WIS Implementation

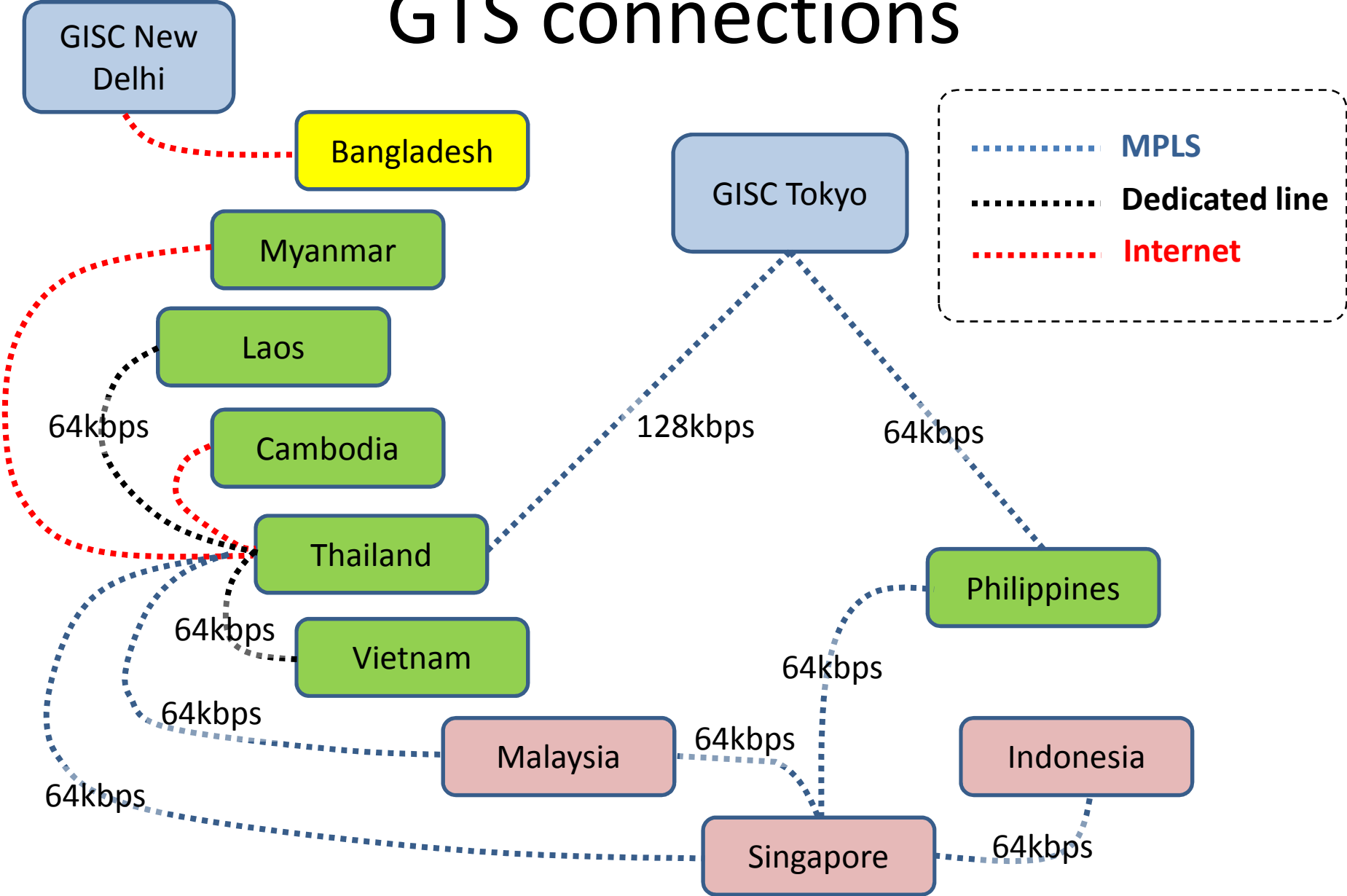
7 December 2016

# GISC Tokyo function

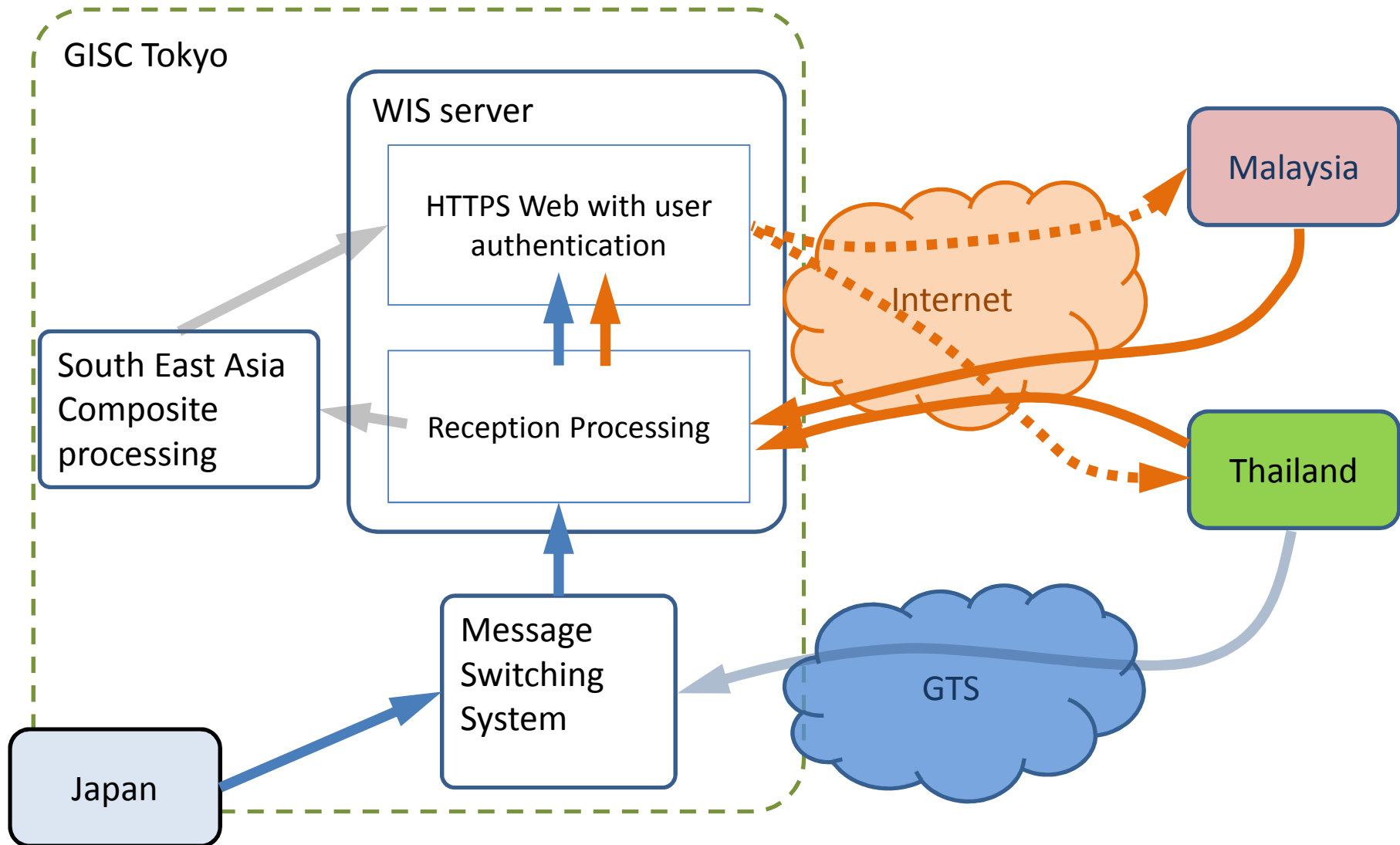
- Data collection : HTTPS file upload, GTS
  - Data provision : HTTPS web for limited radar users
- users



# GTS connections



# Data flow



# HTTPS file upload

Sample command:

```
curl -s -o /dev/null -w '%{http_code}¥n' -T file_local -u user:pass https://www.wis-jma.go.jp/*****/file_remote
```

**file\_local**: your original radar file name

**name**: your ID

**pass**: your password

**file\_remote**: upload file name , e.g. Z\_\_C\_VTBB\_20160930021500\_RDR\_TMDGPV\_Gll0p01deg\_Pri60lv\_Aper15min\_ANAL\_grib2.bin

You can display uploading status, please add “-i” option if you need.

For example: curl **-i** -s -o /dev/null -w '%{http\_code}¥n' -T .....

When you set “i”, following status code & message will be shown.

- HTTP/1.1 200 file uploaded. size:xxxx
  - when you completed upload without problems
- HTTP/1.1 204 already exists file.
  - when you try to upload a same file
- HTTP/1.1 500 no much grib format.
  - when you uploaded a file in non-GRIB2 format
- HTTP/1.1 403 limit over size.
  - when you uploaded 4Mbytes file or more
- HTTP/1.1 403 no matched filename.
  - when you uploaded non-agreed file name standard



# Filename

- WMO general file naming conventions
  - Part II, ATTACHEMNT II-15  
Manual on the Global Telecommunication System(WMO-No.386)

Country/Region	Filename
South East ASIA	Z__C_RJTD_yyyyMMddhhmmss_RDR_SEAGPV_Gll0p01deg_Pri60lv_Aper60min_ANAL_grib2.bin
Malaysia	Z__C_WMKK_yyyyMMddhhmmss_RDR_MMDGPV_Gll0p01deg_Pri60lv_Aper10min_ANAL_grib2.bin
Thailand	Z__C_VTBB_yyyyMMddhhmmss_RDR_TMDGPV_Gll0p01deg_Pri60lv_Aper15min_ANAL_grib2.bin
Japan	Z__C_RJTD_yyyyMMddhhmmss_RDR_JPNGPV_Ggis1km_Pri60lv_Aper5min_ANAL_grib2.bin

# Filename

Manual on the GTS

```
Pflag_productidentifier_oflag_originator_  
yyyyMMddhhmmss[_freeformat].type[.compression]
```

```
Z__C_RJTD_yyyyMMddhhmmss_RDR_SEAGPV  
_Gll0p01deg_Pri60lv_Aper60min_ANAL_grib2.bin
```

**Z** : Local product identifier

**C** : The originator will be a CCCC country codes

**RJTD** : Originator CCCC

**yyyyMMddhhmmss** : a fixed length date and time stamp field



# Filename

**Z\_\_C\_RJTD\_**yyyyMMddhhmmss\_RDR\_SEAGPV  
\_Gll0p01deg\_Pri60lv\_Aper60min\_ANAL\_grib2.**bin**

RDR : Radar

SEAGPV : Grid point Value of South East Asia

Gll0p01deg : latitude and longitude grid

0.01 degree resolution

Pri60lv : 60-min rain fall intensity / level values

Aper60min : Analysis time interval

ANAL : Analysis

grib2 : FM92 GRIB edition2

**bin** : WMO binary code form (GRIB or BUFR)

# FM92 GRIB edition2

Manual on Codes

SECTION 0	Indicator section	"GRIB", discipline, GRIB edition number, length of message
SECTION 1	Identification section	Originating centre, GRIB Master table version number, reference time, ...
SECTION 2 (	Local use section	) Option for local use
SECTION 3	Grid definition section	Grid definition, number of data points Grid definition template, ...
SECTION 4	Product definition section	Product definition template, product discipline, product category, ...
SECTION 5	Data representation section	Data representation template, definition of packing total number of data points, ...
SECTION 6	Bit-map section	Indication of presence or absence of data at each of the grid points, as applicable
SECTION 7	Data section	Data values
SECTION 8	End section	"7777"

Thank you

