

GISC backup

Kenji KOSUGE

Information and Communications
Technology Division

Japan Meteorological Agency



KEY

What`s GISC backup?

How to procedures?

GISC Tokyo

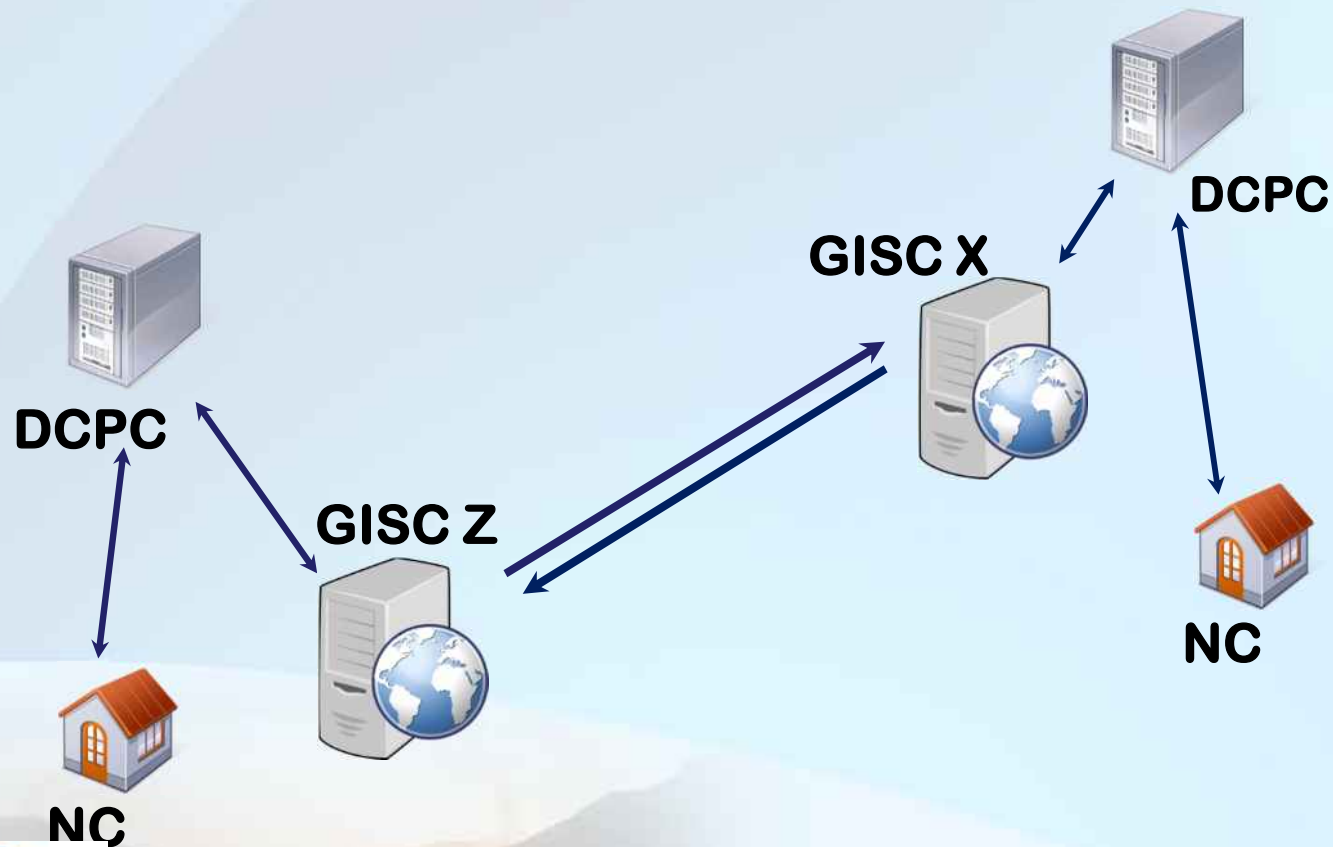
GISC Melbourne

GISC Beijing

GISC Offenbach

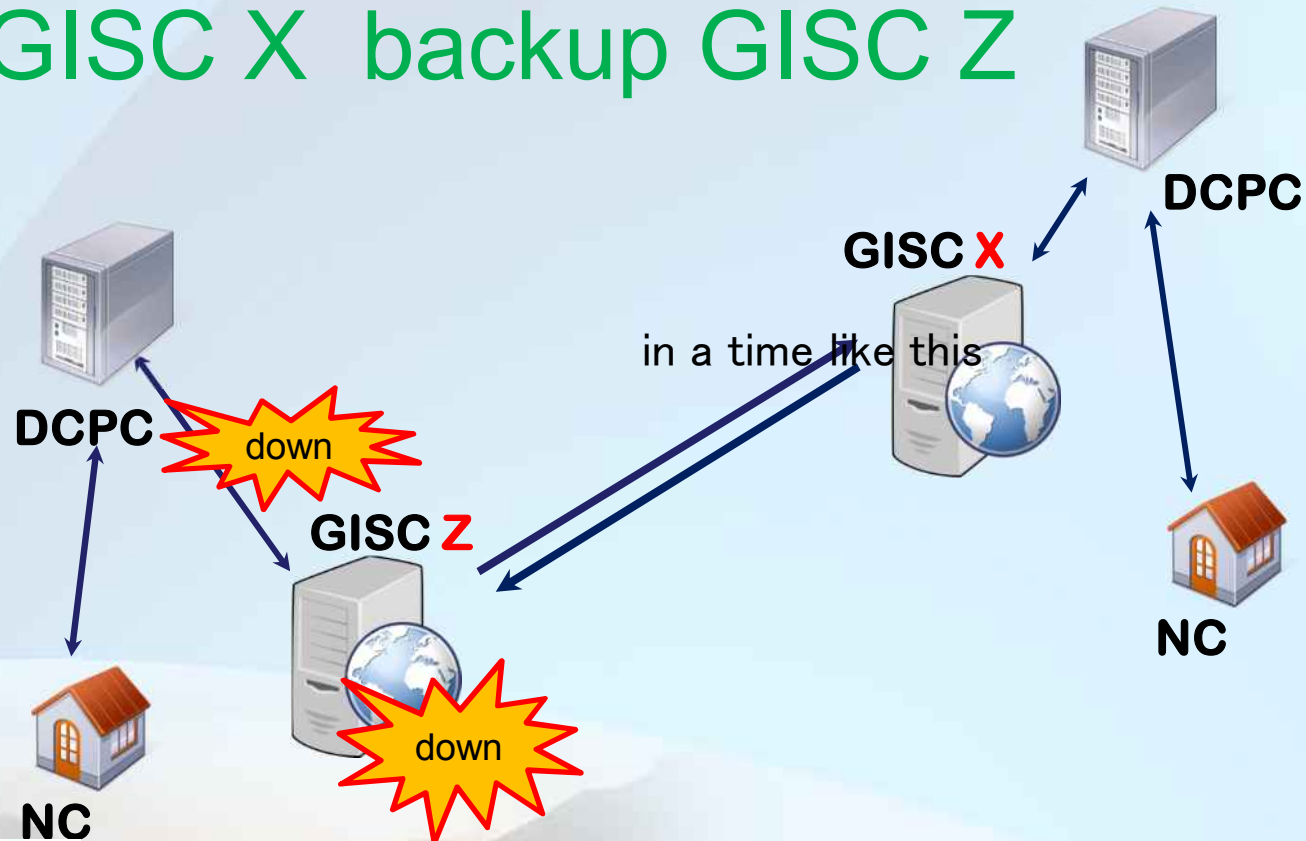


What`s GISC backup?



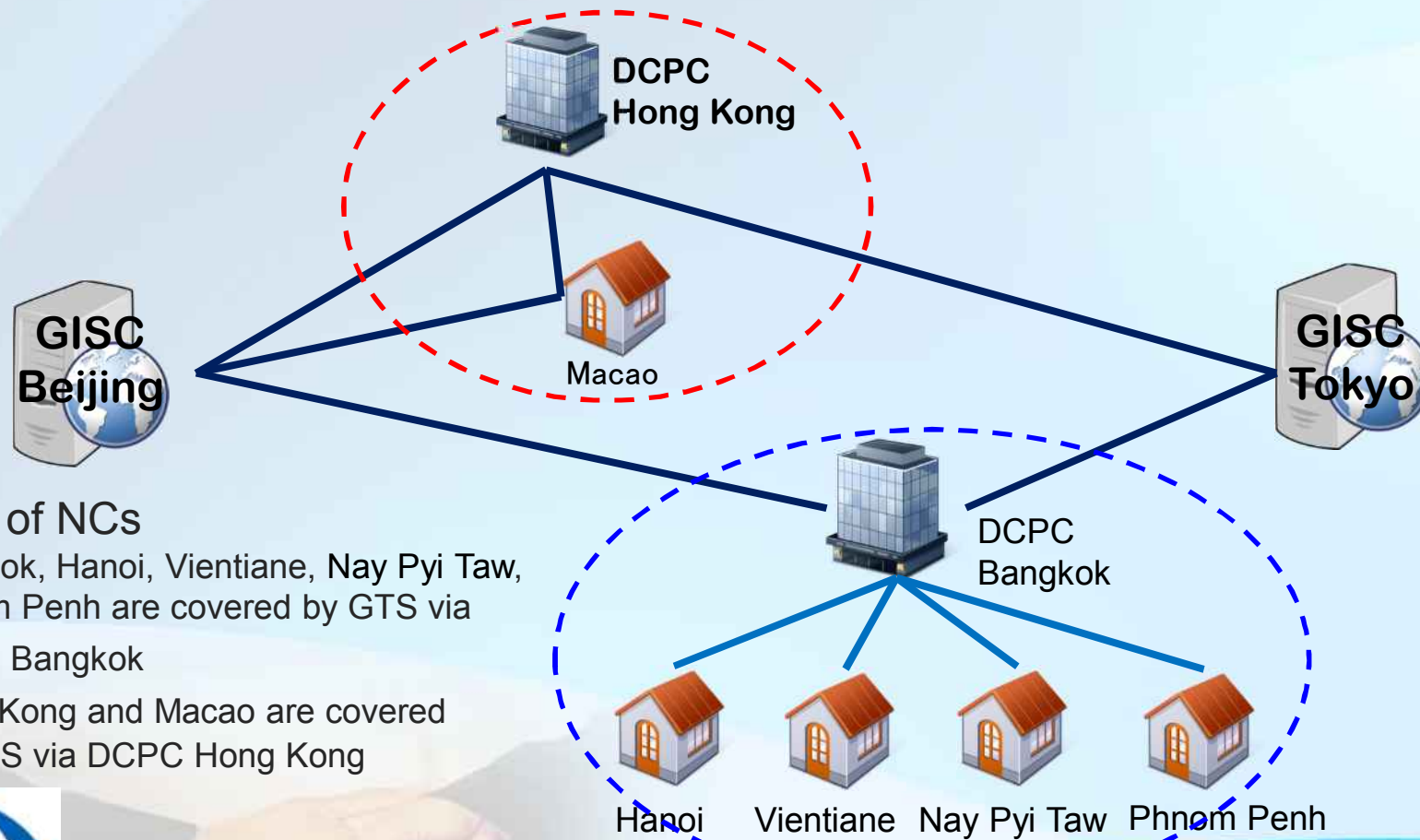
What`s GISC backup?

GISC X backup GISC Z



CASE1 GISC Tokyo and Beijing

Current GTS connectivity



Scope of NCs

Bangkok, Hanoi, Vientiane, Nay Pyi Taw, Phnom Penh are covered by GTS via

DCPC Bangkok

Hong Kong and Macao are covered by GTS via DCPC Hong Kong

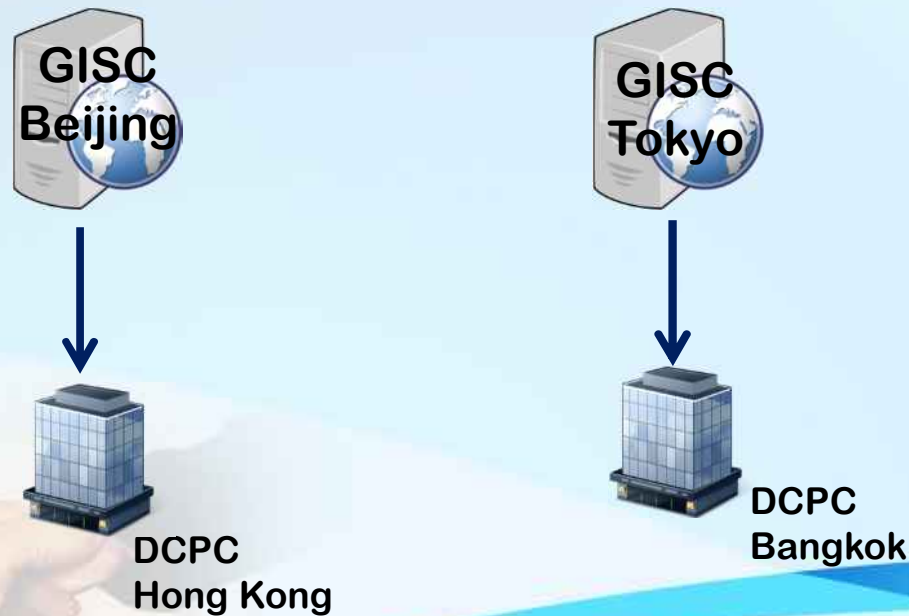


Backup procedures

1. Sharing “data set” between Beijing and Tokyo

Beijing/Tokyo will send the list of selected data set to Tokyo/Beijing.

* selected data set: from Tokyo/Beijing to Bangkok/Hong Kong



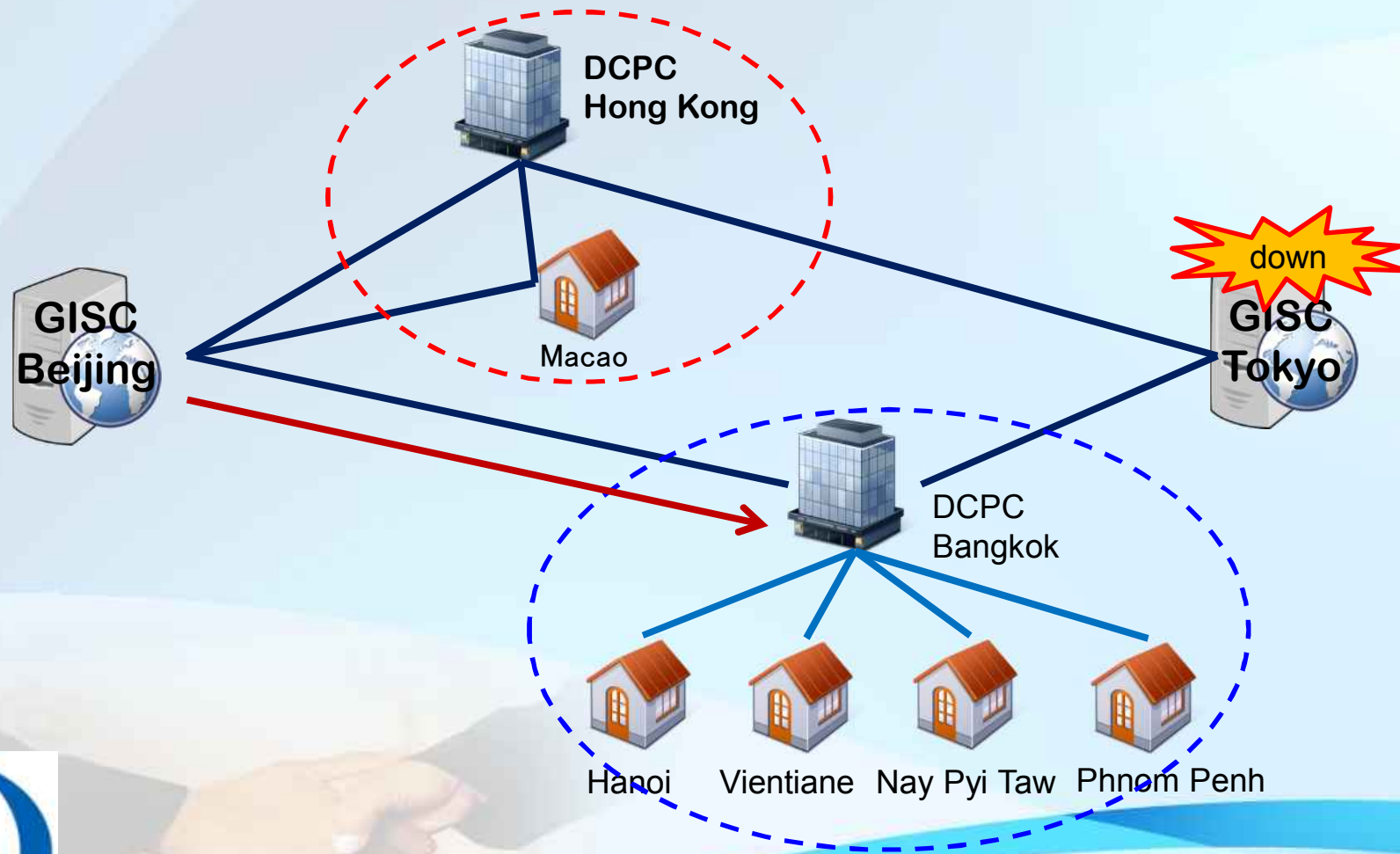
Backup procedures

2. Arranging “same data set” between Hong Kong and Bangkok

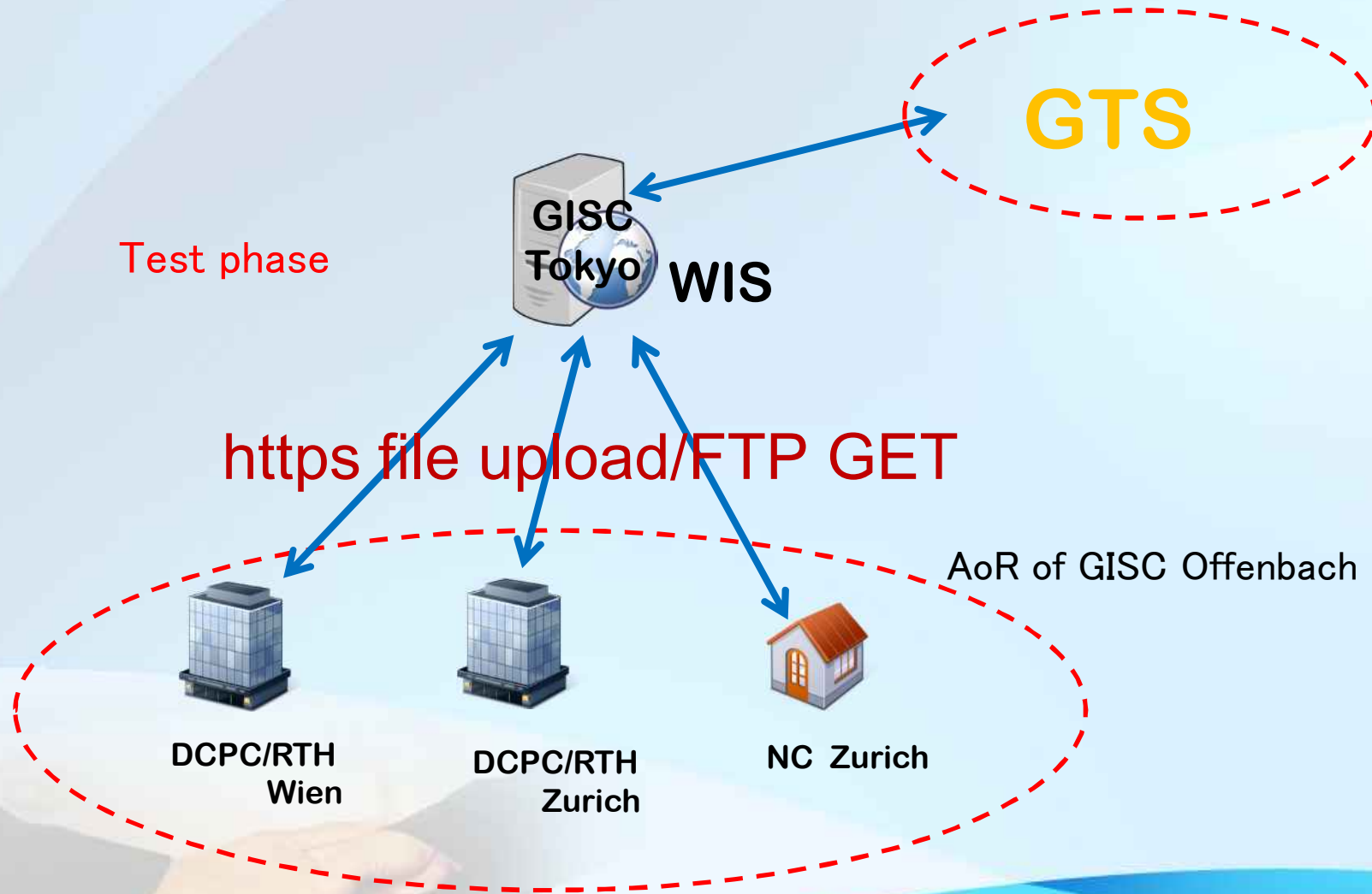
Send same data set to Beijing and Tokyo from Hong Kong/Bangkok



CASE1 GISC Tokyo and Beijing



CASE2 GISC Tokyo and Offenbach



Cooperation GISCs

GISC Tokyo cooperation with GISC Melbourne
with Beijing
with Offenbach



Thank you

