

# WMO's New Organization and GISC Tokyo's Involvement

TSUNODA Kenji

Information and Communications Technology Division

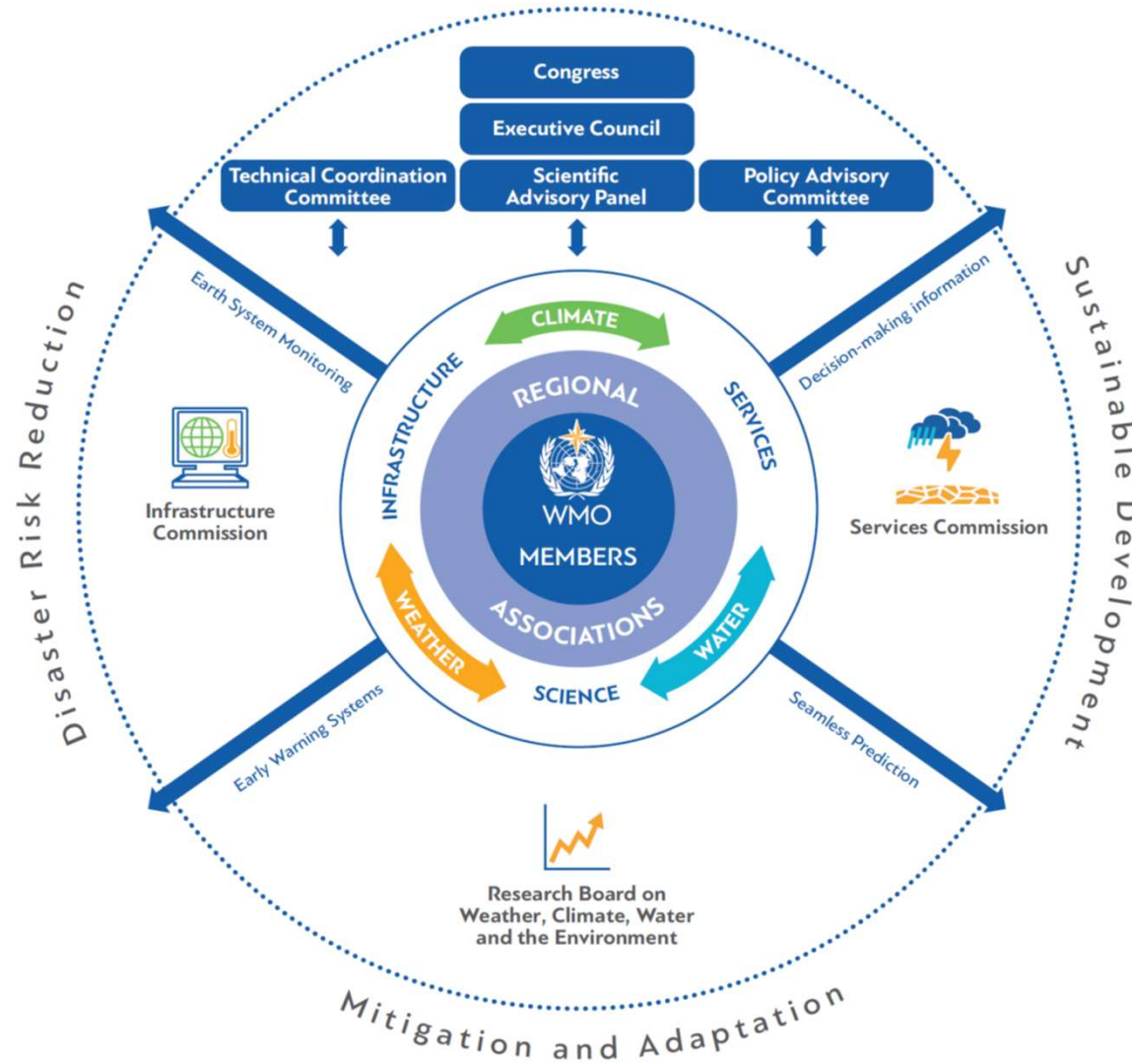
Information Infrastructure Department

Japan Meteorological Agency

# Contents

- WMO Reform
  - Constituent body
  - WMO Secretariat
- WIS2 related Expert Teams
  - SC-IMT structure
  - Nomination and membership
- WIS2 Transition

# WMO Reform



Reference: [Governance Reform | World Meteorological Organization \(wmo.int\)](https://www.wmo.int/governance-reform)



# Constituent Bodies mapping

## Before

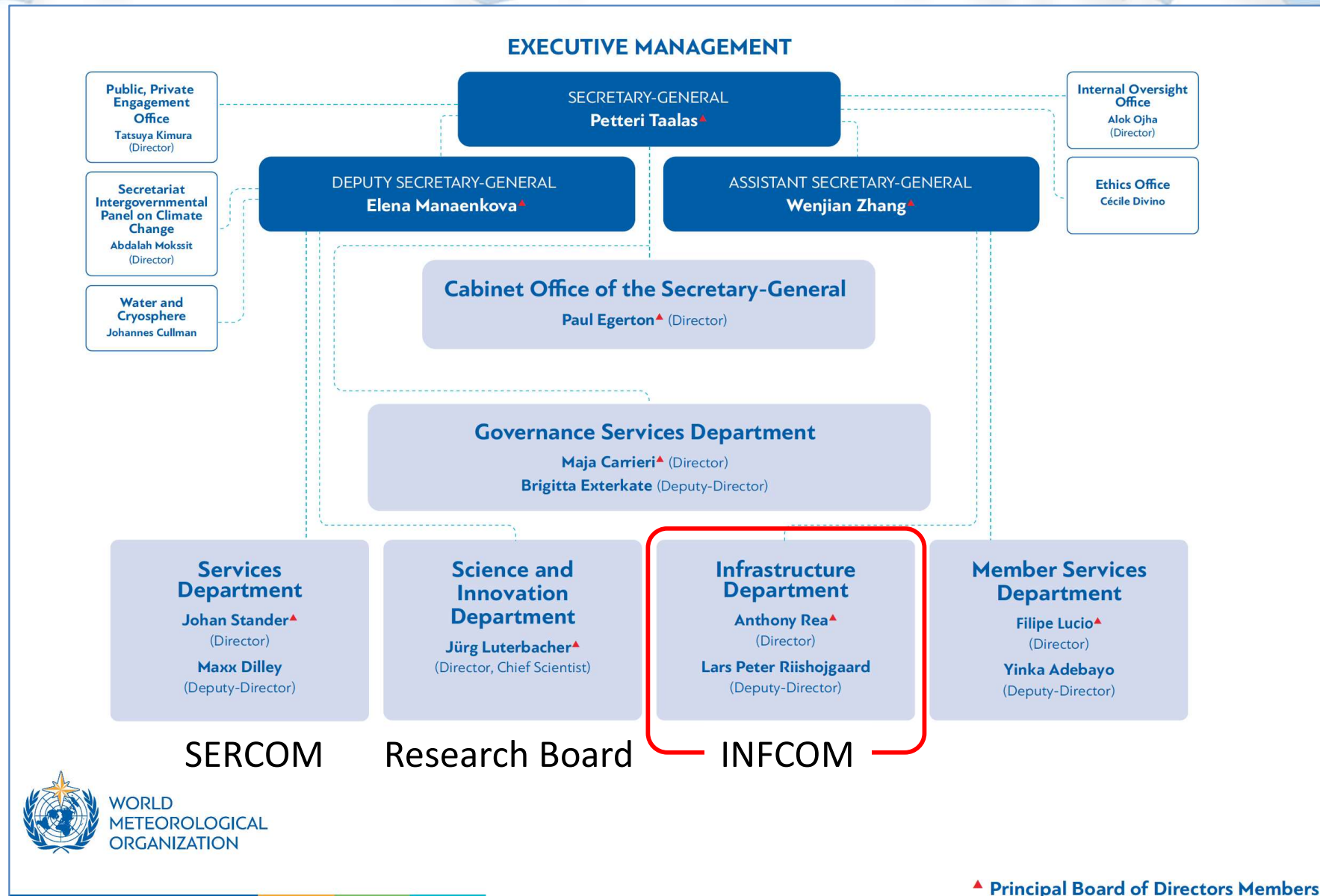
- Congress
- Executive Council
- Regional Associations
  - RA I, II, III, IV, V, VI
- Technical Commissions
  - CAeM, CAgM, CCI, CHy
  - **CBS**, CIMO
  - CAS

## After

- Congress
- Executive Council
- Regional Associations
  - RA I, II, III, IV, V, VI
- Technical Commissions
  - SERCOM
  - **INFCOM**
- Research Board

Reference: [WMO Reform Mapping : Technical Commissions & Other Bodies](#)

# New WMO Secretariat structure

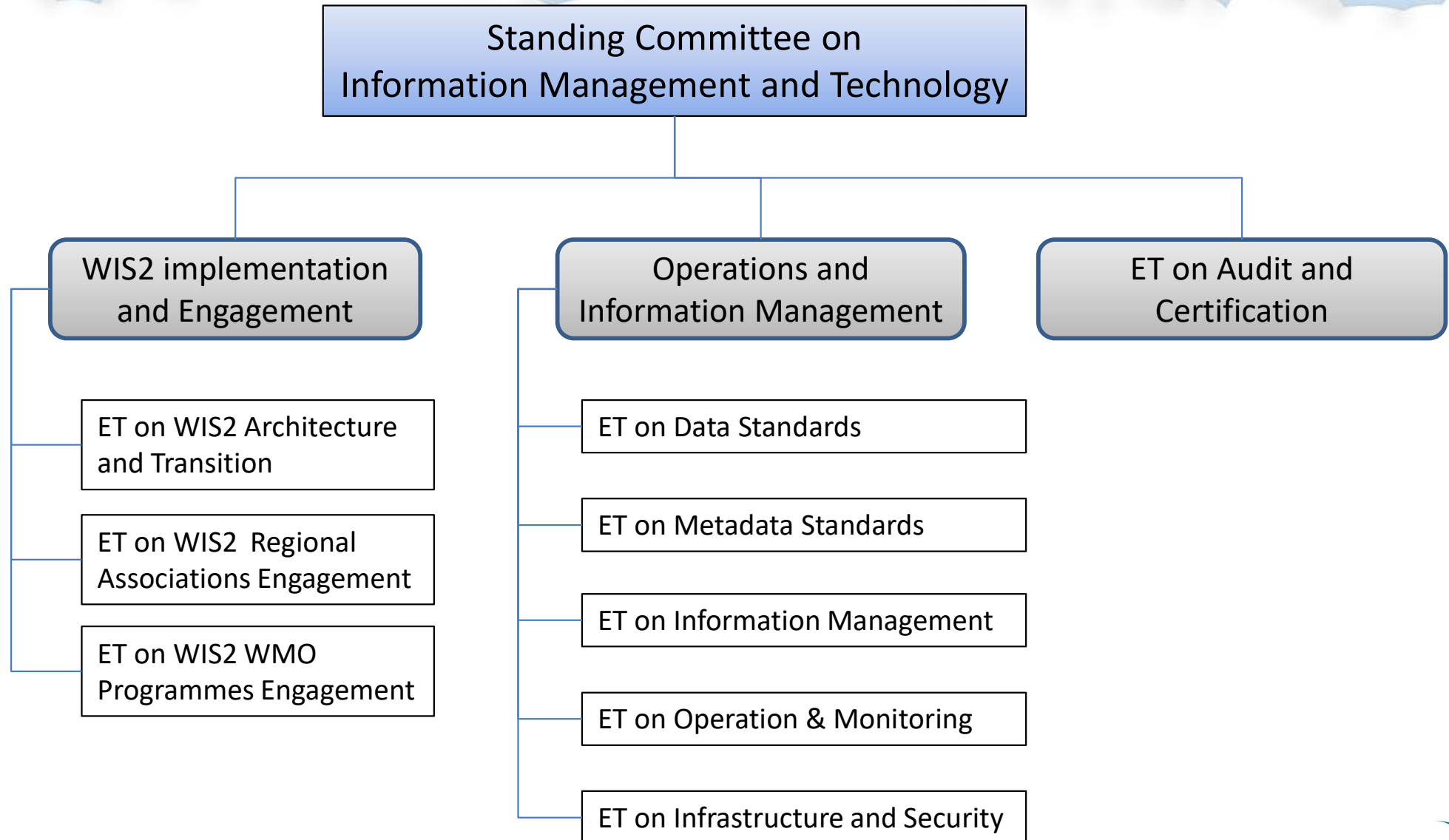


# WIS related Teams

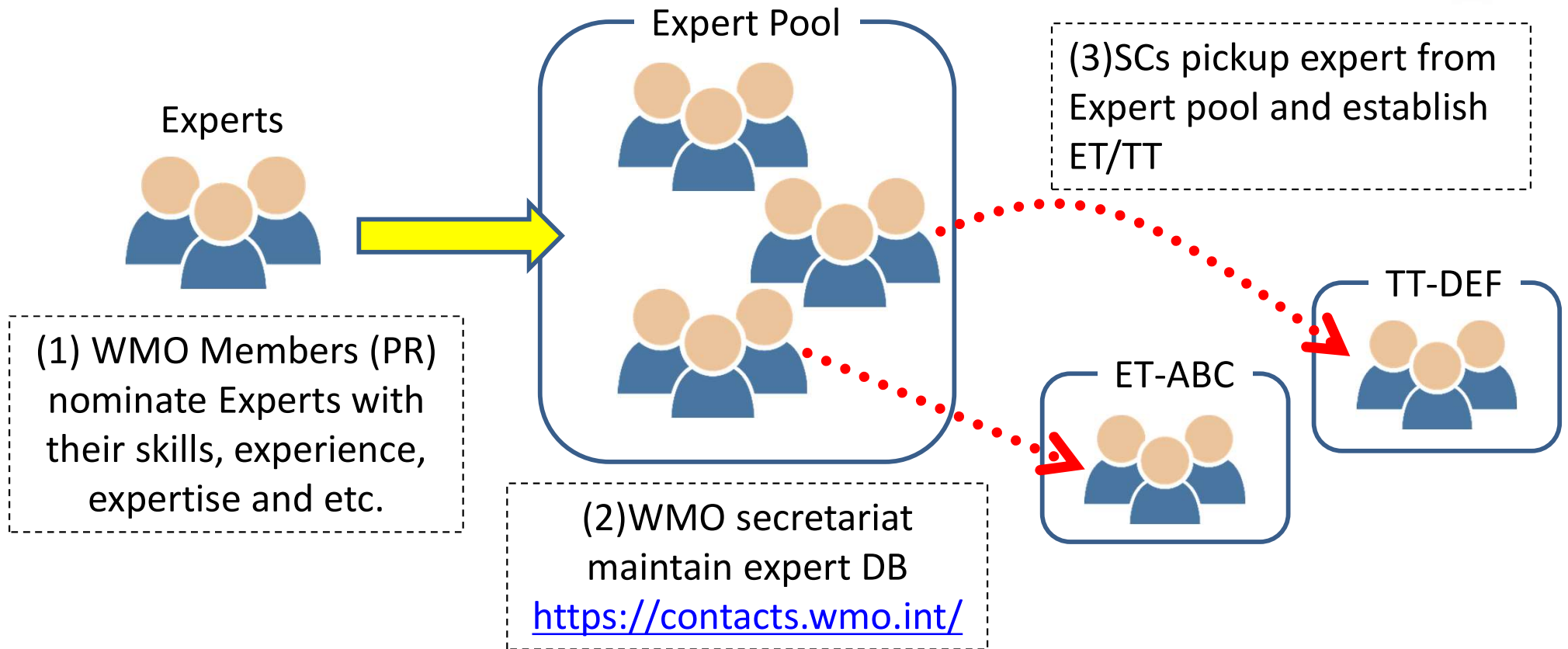
- INFCOM/Standing Committees
  - Standing Committee on Earth Observing Systems and Monitoring Networks (SC-ON)
  - Standing Committee on Information Management and Technology (SC-IMT)
  - Standing Committee on Data Processing for Applied Earth System Modelling and Prediction(SC-ESMP)
  - Standing Committee on Measurements, Instrumentation and Traceability (SC-MINT)



# INFCOM/SC-IMT Structure



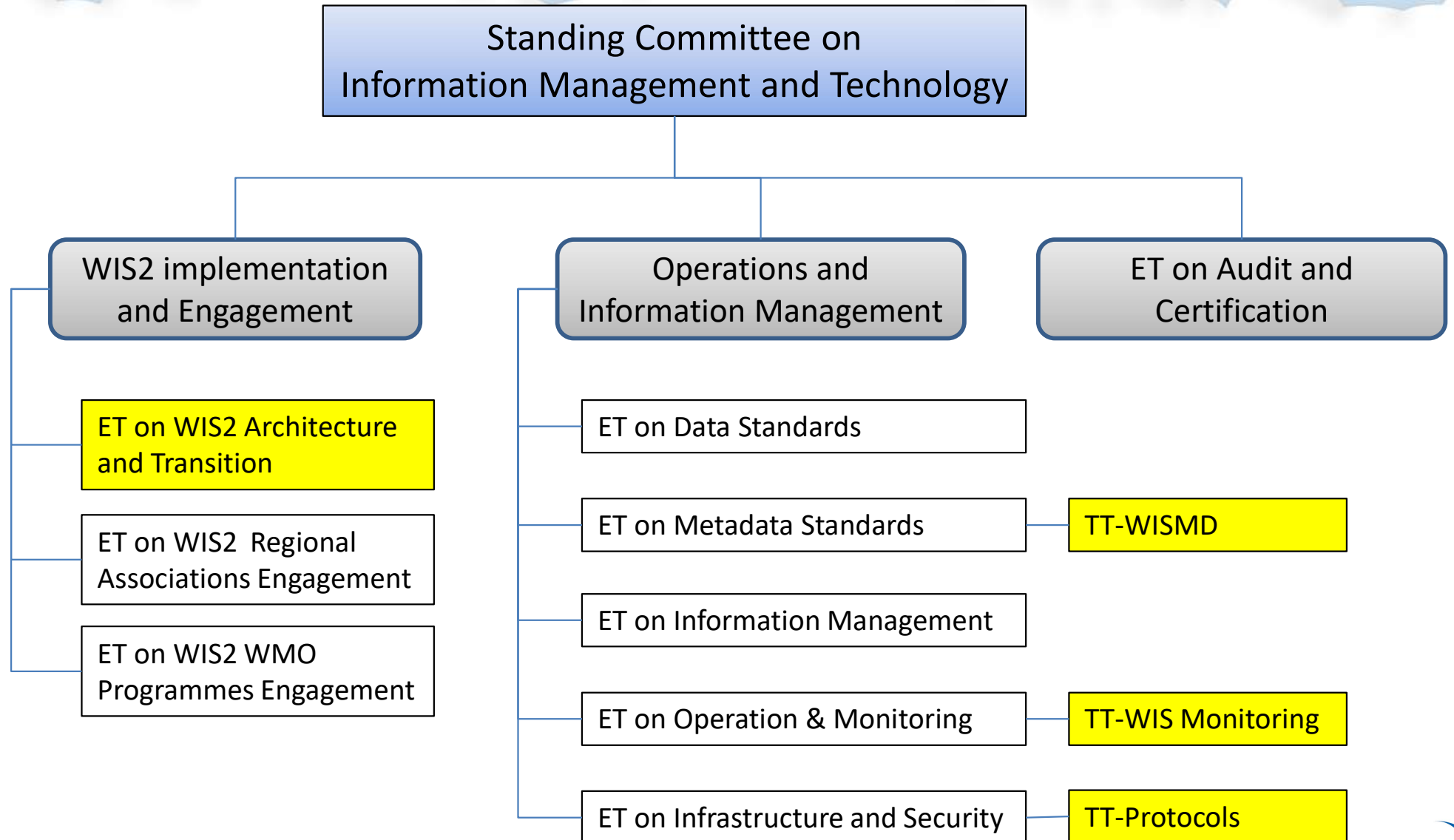
# Expert Nomination & membership



- ETs and TTs can be set up flexibly by standing committees to address the issues and challenges



# INFCOM/SC-IMT Structure



# WIS2.0 Transition

- Transition Plan
  - ET-W2AT is developing WIS2.0 transition plan.
  - The draft plan will be submit to INFCOM-2 (planned in November 2022) and be reviewed/approved by Members. The final draft of the transition plan will be revealed in the Q4 of this year.
  - The Plan will be approved by the Congress in 2023
  - Transition will start in 2024.



Thank you for your attention