

**Country (Lao PDR)**  
**Status of the**  
**information systems & operations**  
**at Department of Meteorology and**  
**Hydrology (DMH)**

Bounteum Sisouphanthavong

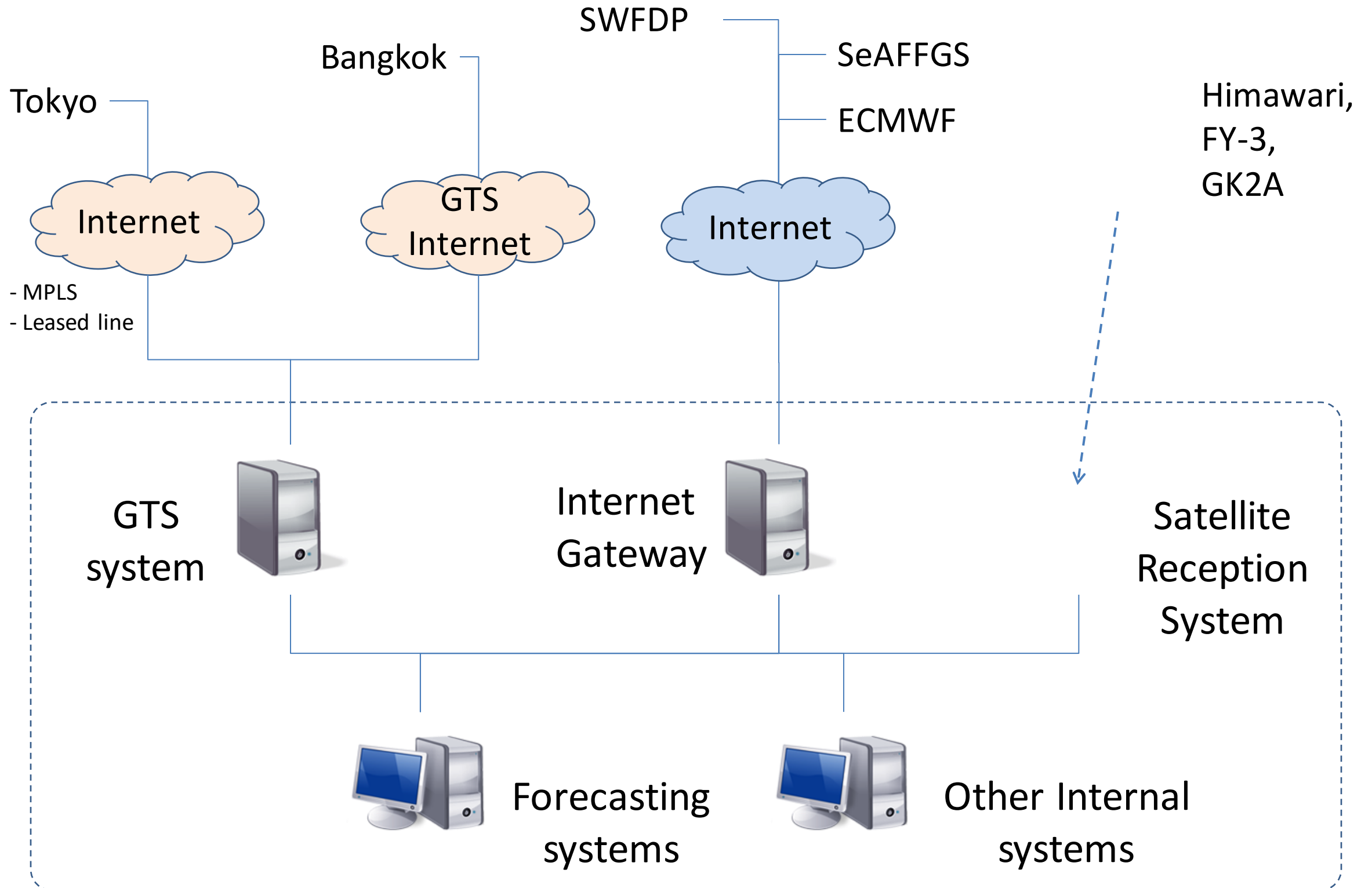
JMA WIS Workshop  
17-19 January 2022, on-line (MS-Teams)

# Contents

- Presentation
  1. System/network configuration
  2. Internet tools
  3. Utilize Internet Services
  4. Plans, Issues etc.
  
- Annexes
  - a. International Connections
  - b. Data reception from GTS/WIS
  - c. Data provision to GTS/WIS



# 1. System/network configuration



## 2. Internet tools

- Tools for day-to-day operation
  - JMA SataID
    - <https://www.wis-jma.go.jp/cms/sataid/>
  - ECMWF forecast charts and data
    - <https://www.ecmwf.int/en/forecasts>
  - JAXA GSMaP
    - <https://sharaku.eorc.jaxa.jp/GSMaP/>
  - Earth Wind Map
    - <https://earth.nullschool.net/>
  - Regional Forecasting Support Center (RFSC) Hanoi
    - <http://www.swfdp-sea.com.vn/index>
  - RSMC-Tokyo-Typhoon Center
    - <https://tynwp-web.kishou.go.jp/index.html>
  - Long range forecast multi-model ensemble
    - [https://www.wmolc.org/seasonPmmeUI/plot\\_PMME#](https://www.wmolc.org/seasonPmmeUI/plot_PMME#)

# 3. Utilize Internet Services

- Providing information to public
  - MONRE website
    - <http://dmh.monre.gov.la/>
  - Facebook
    - <https://www.facebook.com/100578885505378/photos/a.100581735505093/127892339440699/>
  - Youtube
    - <https://youtu.be/dCH3z5HjPuQ>
  - Whatsapp



ຂ່າວຂໍ້ມູນອຸຕຸນິຍົມ-ອຸທິກກະສາດ

Group · 234 participants

## 4. Plans, Issues etc.

- Changes/progress in last three years
  - Established the links via the Internet in Nov. 2018
    - JMA-Tokyo
- Planned changes/improves
  - Upgrade GTS

# ANNEX

- Following items (after this slide) will not be presented by participants, however you can discuss as a QA
  - Annex-a International connections
  - Annex-b Data Reception from GTS/WIS
  - Annex-c Data Provision to GTS/WIS

# Annex-a International connections

Centre	Protocol	Line	Data
Tokyo	WMO Socket	Internet	JMA Model (GRIB), SYNOP, SHIP, TEMP, METAR ...
Bangkok	WMO FTP	GTS	SYNOP, SHIP, TEMP, METAR, Forecast (NCEP), Warnings ...
ECMWF	HTTP	Internet	Global Model (GRIB)
RSMC-Tokyo	HTTP	Internet	Typhoon Forecast, NWP, Warnings, ....
RFSC-Hanoi	HTTP	Internet	Satellite, NWP, Warnings, ....
SeAFFGS	HTTP	Internet	NWP, FFG, Warnings, ....



# Annex-b Data Reception from GTS/WIS

- SYNOP, SHIP, CLIMAT, TEMP, PILOT
- Aviation (METAR, TAF, SIGMET, AMDAR)
- Marine (BUOY, TRACOB, BATHY, TESAC)
- Wind Profiler
- Forecast, Analysis
- Warning
- Tropical cyclone advisories
- Volcanic ash advisories
- etc.

# Annex-c Data Provision to GTS/WIS

- SYNOP (TAC and/or BUFR)
- SHIP (TAC and/or BUFR)
- CLIMAT (TAC and/or BUFR)
- TEMP, PILOT (TAC and/or BUFR)
- PILOT (TAC and/or BUFR)
- etc.