

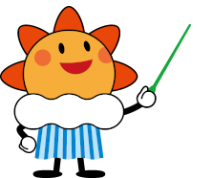
# JMA WIS2.0 Implementation plan

YUGE (OHNO) Yoritsugi

Information and Communications Technology Division

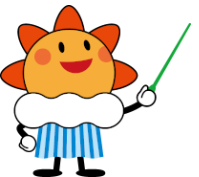
28th-30th November 2023

JMA WIS workshop



# Today's Topic

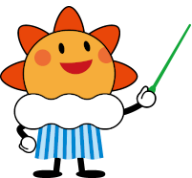
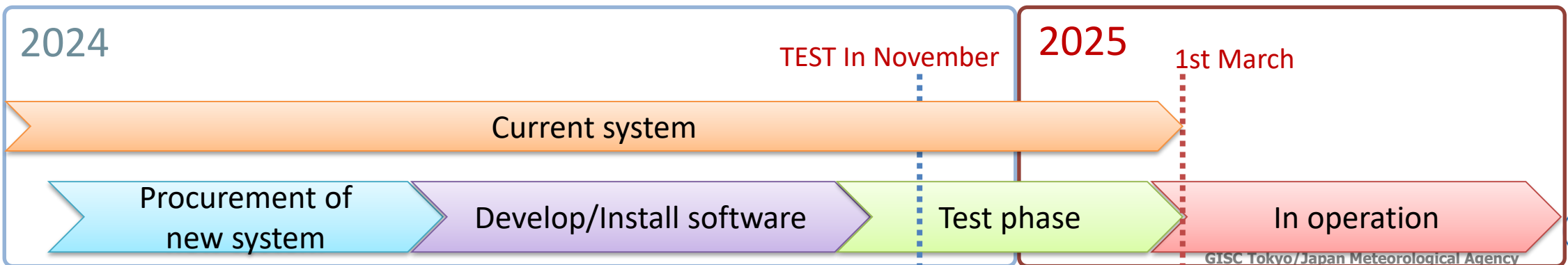
- Information
  - Replacement of JMA WIS portal and Internet GTS system on 2025
  - RMDCN (WIS core network) will terminate on 2028
- Planning of WIS 2.0 implementation on JMA
- Stop GTS transmission (2033)
- Follow up and Support activity
  - Restart onsite technical meeting (visit to cooperation countries)
  - Technical support of WIS2 migration



# Information: (Announcement)

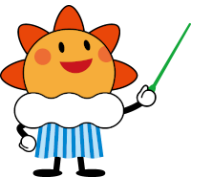
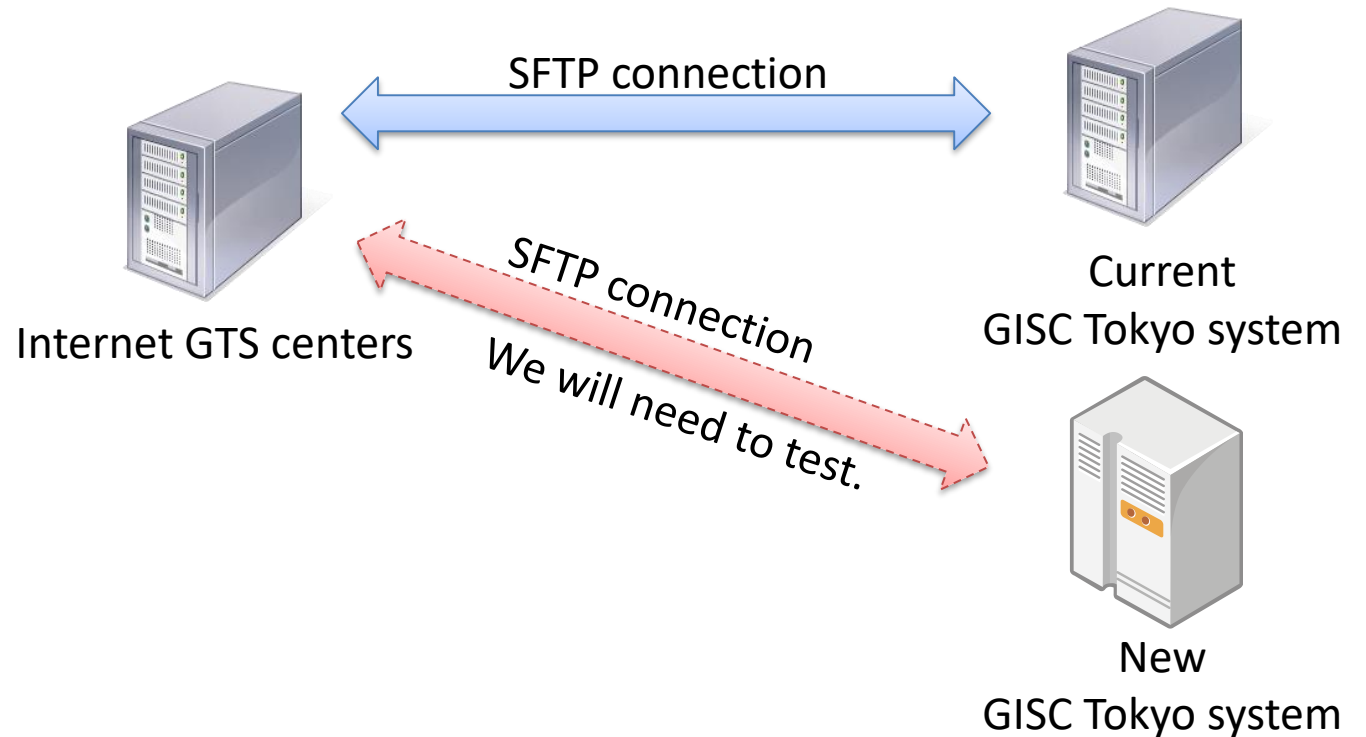
## Replacement of WIS portal and Internet GTS system on 2025

- JMA WIS portal will fully replace to new system on 2025.
- It will be operated in March 2025.
- Also Internet GTS (SFTP) system will migrate to new system.
- So, we are considering to do connectivity test with Internet GTS centres at around Nov. 2024. Please deal with this test.
- Test will be an 1 hour.

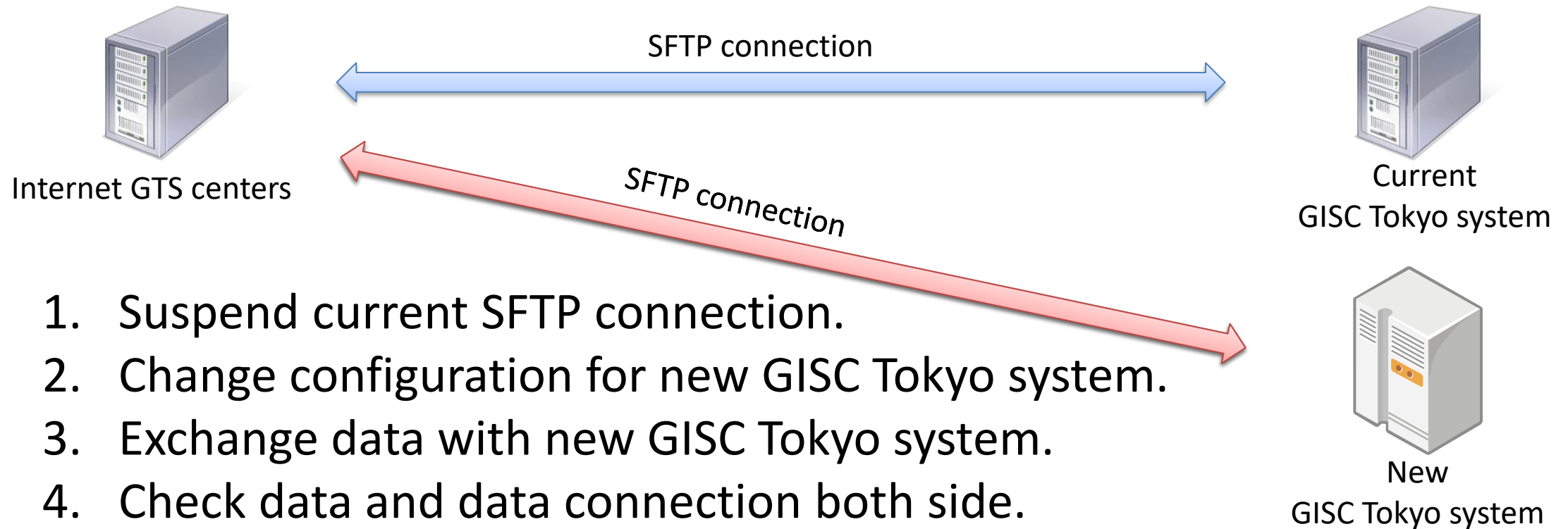


# Internet GTS connection

- SFTP connection with GISC Tokyo
  - Philippines
  - Vietnam
  - Myanmar
  - Cambodia
  - Bangladesh
  - Qatar

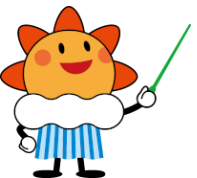


# Draft test procedures for Internet GTS



1. Suspend current SFTP connection.
2. Change configuration for new GISC Tokyo system.
3. Exchange data with new GISC Tokyo system.
4. Check data and data connection both side.
5. Get back to configuration for current GISC Tokyo system.
6. Restart current SFTP connection.

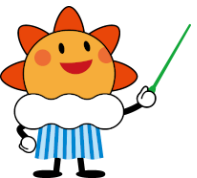
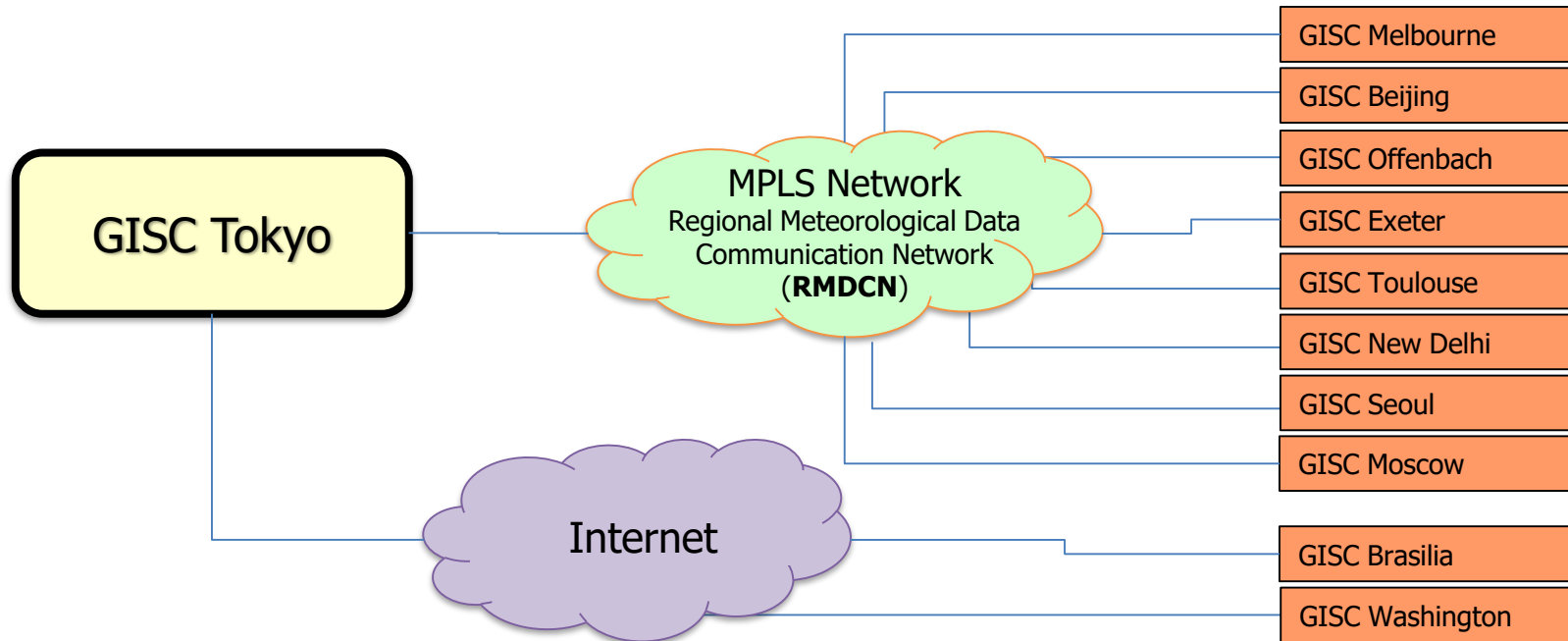
**This connection TEST will be on November 2024.**



# Information:

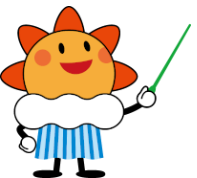
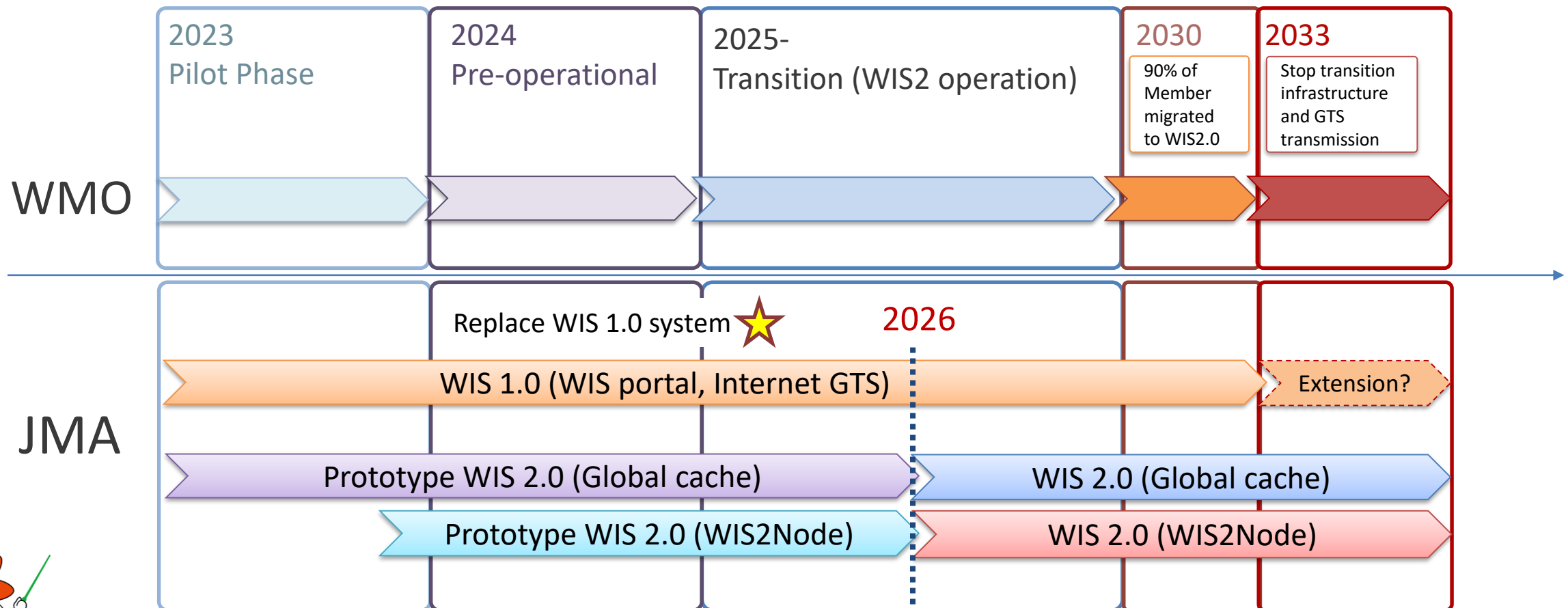
## RMDCN (WIS core network) will terminate on 2028

- RMDCN of WIS core network will terminate on 2028.
- GISC Tokyo has been connecting with 8 GISCs through RMDCN.
- JMA is considering to migrate to Internet based connection in order to keep bilateral data exchange among each GISCs.



# Planning of WIS 2.0 implementation

- JMA implementation plan for WIS 2.0

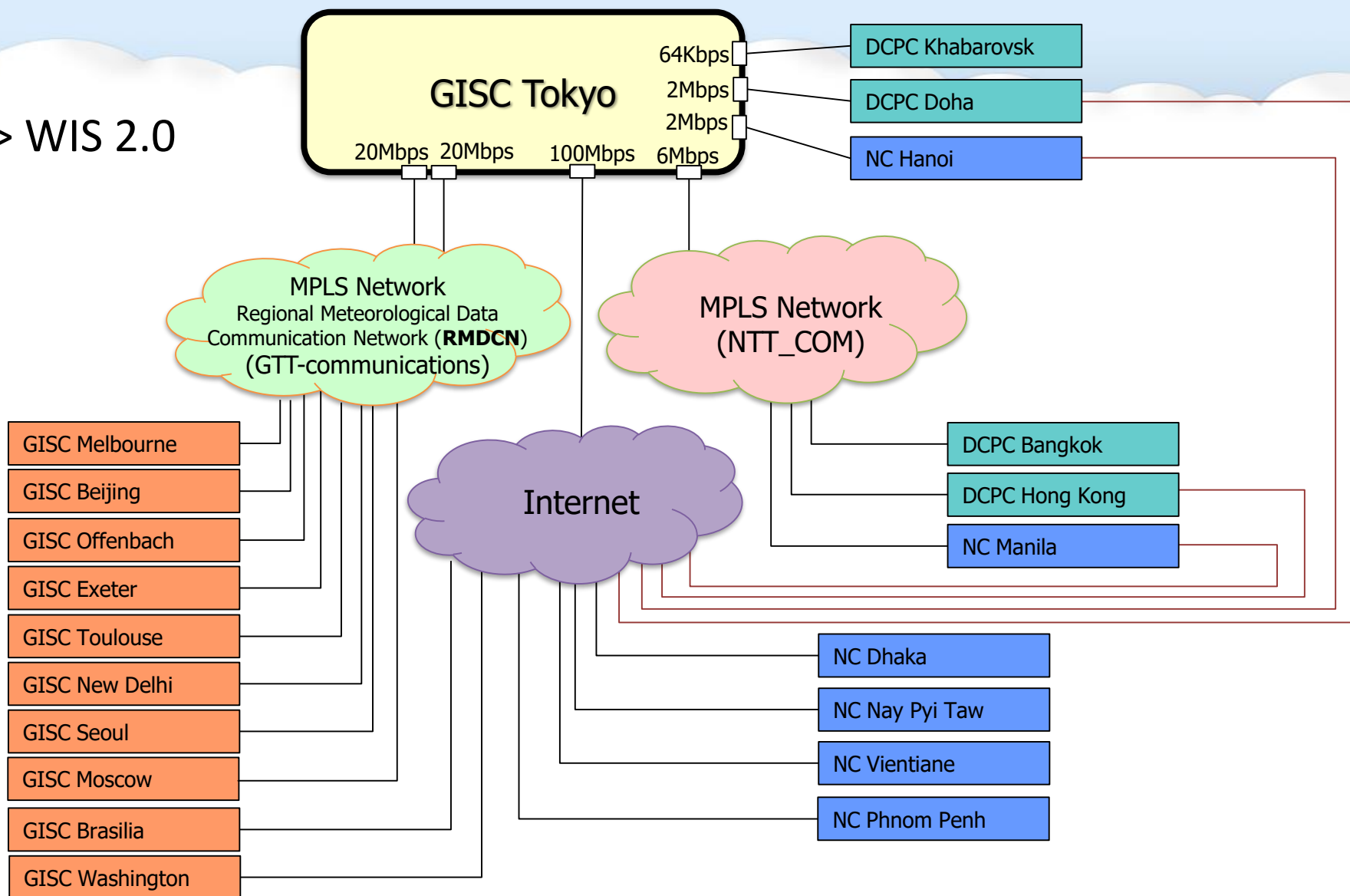




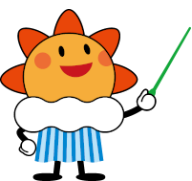


# Stop GTS transmission on 2033

WIS 1.0 (GTS) -> WIS 2.0

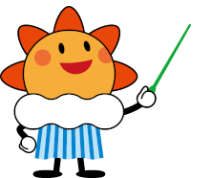
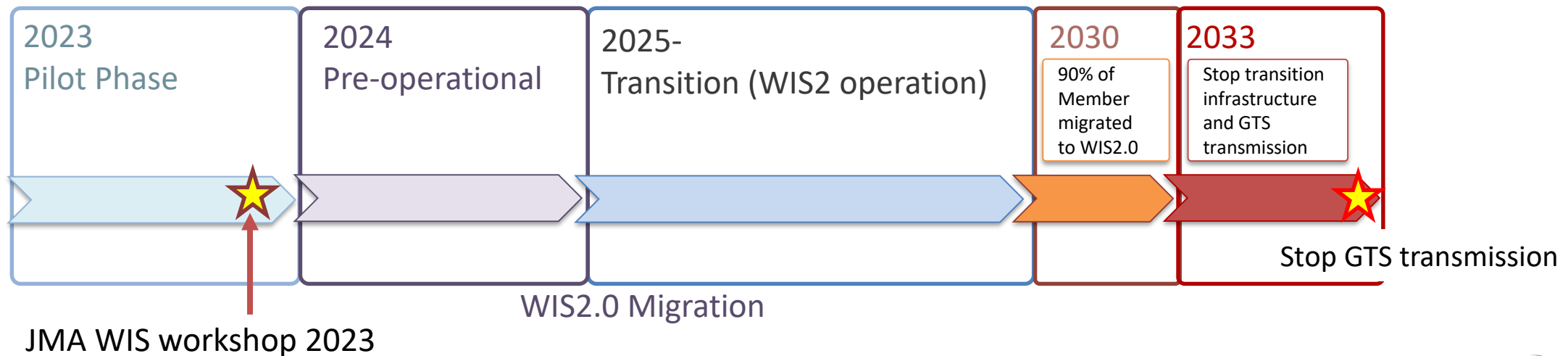


GISC Tokyo network configuration



# Stop GTS transmission on 2033

- WMO is considering to stop GTS transmission on 2033.
  - In 2025, WMO members are going to start WIS2 migration.
  - In 2030, 90% of WMO members will finish to migrate to WIS 2.0.
  - In **2033**, WMO will stop GTS transmission.

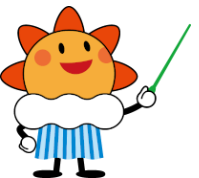


# Follow up and Support activity

- Restart onsite technical meeting
  - Visit to cooperation countries as WIS activity

Countries	1st	2nd	3rd	4th
Cambodia	2012	2015		
Thailand	2012	2013	2015	2017
Viet Nam	2012	2014	2018	
Myanmar	2014	2017		
Lao PDR	2013	2015	2018	
Philippines	2012	2014		
Bangladesh	2017			

- JMA has a plan to visit to cooperation countries in 2024.
  - We have not decided yet what country will visit.





Viet Nam Apr. 2014



Philippines Apr. 2014



Cambodia Mar. 2015



Myanmar Mar. 2017



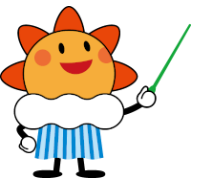
Bangladesh Oct. 2017



Thailand Oct. 2017



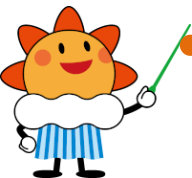
Lao PDR Apr. 2018



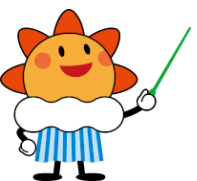


# Follow up and Support activity

- Technical support of WIS2 migration  
Please consider that,  
for example:
  - What your system needs for WIS2 migration?
  - How to install WIS2 function to current system?
- We would like to find out solution for your WIS2 migration together.
- JMA continues to support your WIS2 migration.
- Please feel free to contact our WIS team.



# Question?



Thank you for your attention  
See you next time!

