

Country Report of Japan

TONOOKA Yutaro

JMA WIS Workshop
November 2025

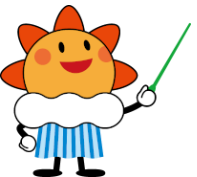
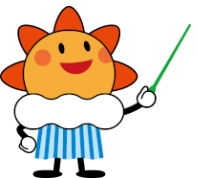
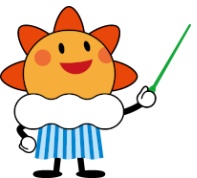
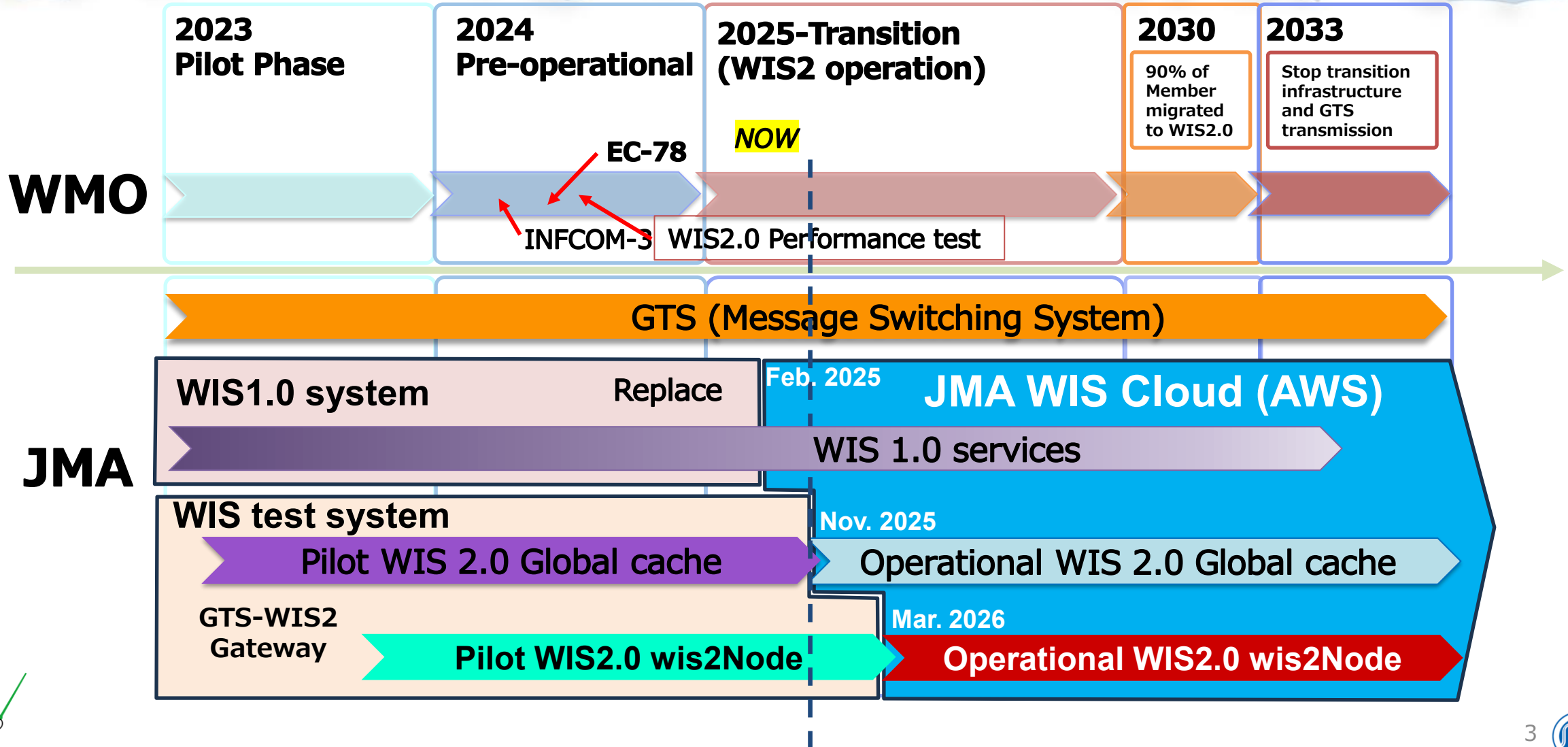


Table of Contents

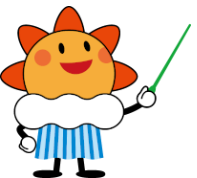
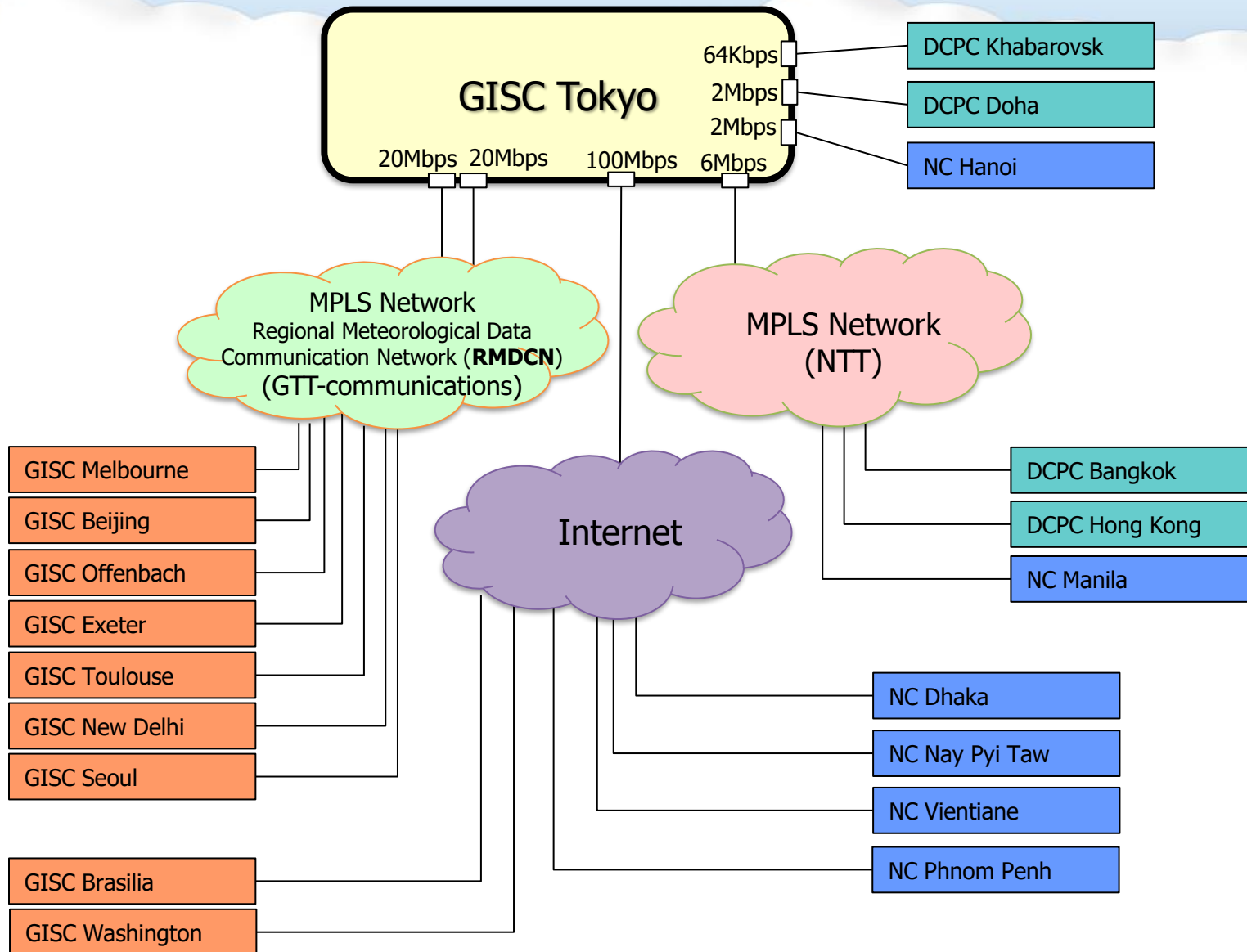
1. Status of system of JMA
2. GISC Tokyo network
3. WIS 1.0 in the cloud
4. Issues of WIS 1.0
5. WIS 2.0 in the cloud
6. Challenges of WIS 2.0
7. Follow up and Support activity



Status of system of JMA



GISC Tokyo Network

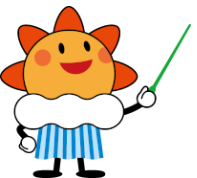


GISC Tokyo Network

Internet connection with GISC Tokyo

- GISC Tokyo AoR
 - Philippines (SFTP)
 - Thailand (SFTP)
 - Viet Nam (HTTPS)
 - Lao PDR (HTTPS)
 - Myanmar (SFTP)
 - Cambodia (SFTP)
- Related country
 - Qatar (SFTP)
 - Bangladesh (SFTP)
 - Yemen (SFTP) (prepared)
 - Mongolia (SFTP)

Note: connected to Tokyo via dedicated network or line



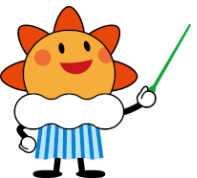
GISC backup

- **GISC Offenbach**

- Israel (FTP)
- Sweden (SFTP)
- Austria (HTTPS)
- Cyprus (HTTPS)
- Czech Republic (HTTPS)
- Italy (HTTPS)
- Jordan (HTTPS)
- Switzerland (HTTPS)

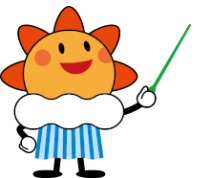
- **GISC Beijing**

- Hong Kong, China (HTTPS, MPLS)



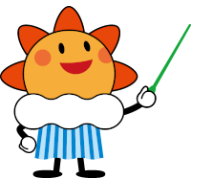
WIS 1.0 in the cloud

- **Government Cloud (Japan)**
 - A shared IT infrastructure that enables central government ministries, independent administrative agencies, and local governments to jointly use business systems as cloud services.
- JMA's WIS moved from on-premises systems to the Government Cloud (adopt AWS) in **February 2025**.
- All functions of JMA's WIS work the same way.



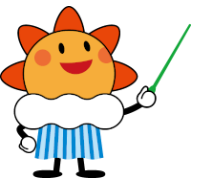
Issues of WIS 1.0

- Access Blocking due to AWS WAF
Previously permitted access was identified by AWS WAF as a malicious attack, resulting in several users being unable to retrieve data.
❌ WAF : Web Application Firewall
- Connections between Tokyo and Doha, Dhaka, and Vientiane are currently suspended.
- Internet data exchange will be established instead of the RMDCN during the transition period.



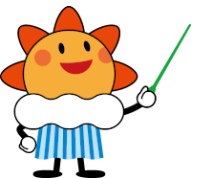
WIS 2.0 in the cloud

- JMA operates Global Cache and GTS-to-WIS2 gateway.
- It was re-built on AWS cloud.
- New Global Cache needs to pass the WMO Global Service Testing.
It will be operational after the test.



Challenges of WIS 2.0

- Provide all meteorological data of JMA (Numerical Weather Prediction, marine, satellite, aviation, etc.) to WIS2
 - ✂SYNOP has already been provided to WIS2
- Internal coordination to make WIS2 metadata.
- Get WIS2 data to domestic users or systems.



Follow up and Support activity

- **Purpose:**

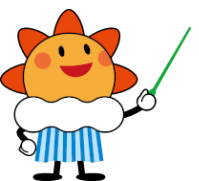
To promote the adoption and implementation of WIS2.0 through discussions on its operation, system development, capacity building, and current challenges.

- **Status:**

Activities were suspended due to COVID-19 but have resumed this year.

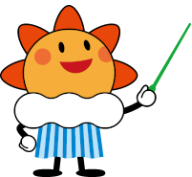
- **2025:** Cambodia, Thailand

- **2026 (Planned):** Vietnam, Lao PDR, Philippines

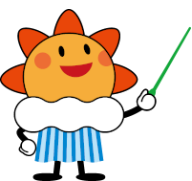


A graphic of a globe with the text "Onsite Meeting" overlaid in white.

Onsite
Meeting



Question?



Thank you for your attention
See you next time!

