

Country Report
at Thai Meteorological
Department (TMD)
in Thailand

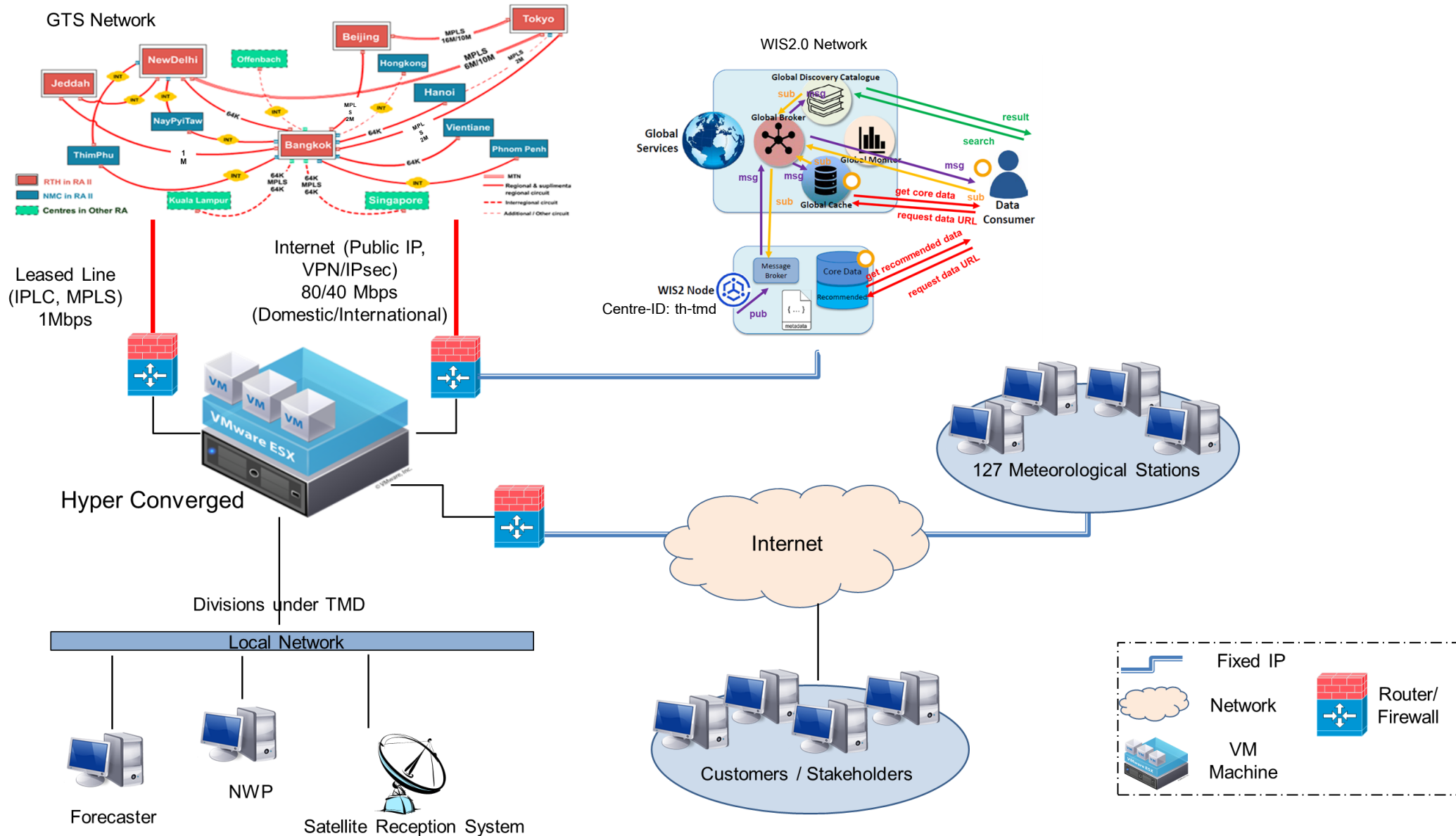
Natthaporn Lertsamranpinit

JMA WIS Workshop
November 2025

Table of Contents

1. Status of system/network configuration
2. Challenges of the current system/network
3. Status of WIS2.0
4. Challenges of the WIS2.0 of system/network
5. Expectation to JMA and other countries
6. AOB (Any Other Business)

1. Status of system/network configuration



1. Status of system/network configuration (cont.)

- *Recent updates of MSS(Message Switching System)*
 - *2018: Started operation of the current system (Netsys)*
- *Service level by system supplier*
 - *24/7 by Genomath & Netsys*
- *Application on the MSS*
 - *AMSS, WEB services, Weather Charts, etc.*
- *Operating system*
 - *RedHat 6.9 64bit for MSS, CentOS 6.9 64bit for Workstation*
- *Fund*
 - *Thai Government*

1. Status of system/network configuration (cont.)

No.	Country	Wan Topology	Protocol	Speed
1	Beijing	Leased Line (MPLS)	FTP	2 Mbps
2	Japan	Leased Line (MPLS)	Socket	2 Mbps
3	New Delhi	Internet (Public IP)	FTP	80/40 Mbps
4	Jeddah	Leased Line (MPLS)	FTP	1 Mbps
5	Malaysia	Leased Line (MPLS)	Socket	64 Kbps
6	Singapore	Leased Line (MPLS)	Socket	64 Kbps
7	Hong Kong China	Internet (Public IP)	FTP	80/40 Mbps
8	Thimpu	Internet (VPN/IPsec)	FTP	80/40 Mbps
9	Naypyitaw (AoR)	Internet (VPN/IPsec)	FTP	80/40 Mbps
10	Cambodia (AoR)	Internet (VPN/IPsec)	FTP	80/40 Mbps
11	Hanoi (AoR)	Leased Line (IPLC)	FTP	2 Mbps
12	Laos (AoR)	Internet (Public IP)	FTP	80/40 Mbps

2. Challenges of the current system/network

- *Limited human resources (8 staff for 24/7 RTH operations)*
- *Insufficient budget for GTS maintenance and system replacement*
- *Running GTS and WIS2.0 in parallel causes complexity in data management*
- *Native BUFR(Generation from source) has not been implemented.*

3. Status of WIS2.0

- *Installed and configured WIS2Box*
- *Completed registration as a WIS2 Node and passed the WIS2 Node assessment from GISC Tokyo*
- *Started publishing SYNOPTIC data to WIS2.0*
- *Joined the CMA WIS2.0 workshop in September and JMA WIS2.0 workshop every 2 years*
- *Attend online meeting with GISC Tokyo quarterly*
- *Hold internal WIS2.0 follow-up meetings every two weeks*

Future Plan -----

- *Currently using WSL, need to migrate to standalone LINUX for improved stability*
- *Plan to publish more products such as Upper Air observation (TEMP/PILOT) to WIS2.0*
- *New system to support WIS2.0 is under procurement*

4. Challenges of the WIS2.0 of system

- *Need to publish a complete set of data (based on the GTS system) for WIS2.0 subscription*
- *Compatibility issues between the domestic system (based on GTS header) and data from WIS2.0 — may require a domestic gateway for WIS2.0 to GTS*
- *As WIS2.0 is in its early stage, it is essential to stay current with new developments*

5. Expectation to JMA and other countries

- *Need support from GISC Tokyo for capacity development*
- *Regular regional meetings (annual or biannual) to share implementation progress and compliance updates*
- *Technical support and cooperation with other countries in the region*
- *Collaboration and sharing of best practices for WIS2.0 migration*

6. AOB (Any Other Business)

- *Sharing experience and lessons learned from WIS2.0 implementation*
- *Fruitful discussion with participants from other countries*