



Tutorial : GISC Tokyo Subscription Manager

GISC Tokyo / Japan Meteorological Agency



Feature

- Easy setup.
- Easy download setting with simple GUI.
- 5 download settings in one program.
- No additional program.
- Automatic delete function.
- And more...



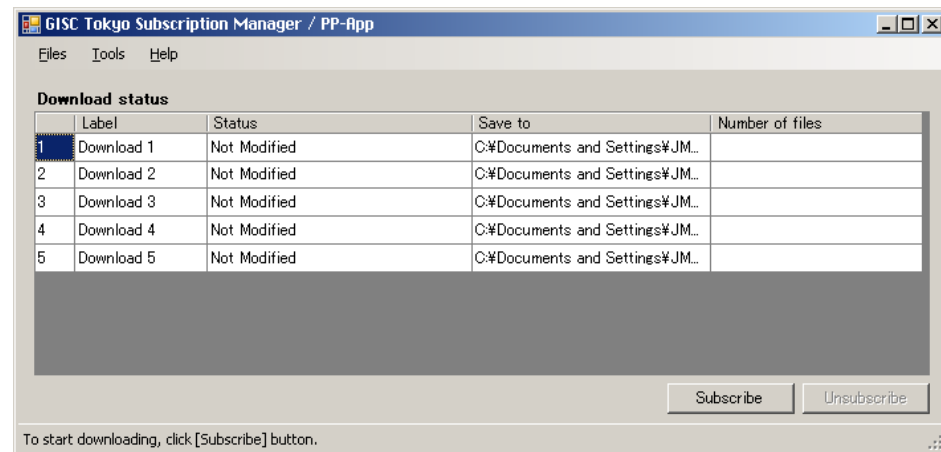
Requirements

- Microsoft Windows XP SP3 or higher.
- Microsoft .net framework 4.
 - Available at Windows Update or Microsoft website.
- Hard disk space for accumulating data files.



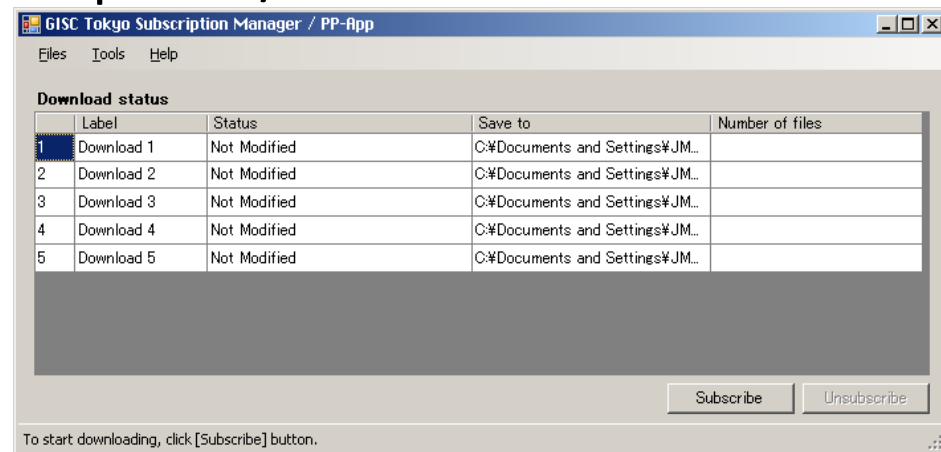
Setup & Start Subscribe

- Download “Subscription Manager” from GISC Tokyo or WISAPP-PP website.
- Copy program file anywhere.
- Double click the program icon.
- Modify download setting from Tools menu and click “Subscribe” button.



Main window

- “Files” menu
 - Subscribe / Unsubscribe / Exit
- “Tools” menu
 - Delete data files / Download setting / Option
- “Help” menu
 - WISAPP-PP website / Helpdesk / About



Subscribe / Unsubscribe / Exit on Files menu

- **Subscribe**
 - To start subscribe, Execute “Subscribe” from Files menu or click “Subscribe” button on main window.
- **Unsubscribe**
 - To stop subscribe, Execute “Unsubscribe” from Files menu or click “Unsubscribe” button on main window.
- **Exit**
 - To exit Subscription Manager, Execute “Exit” from Files menu.



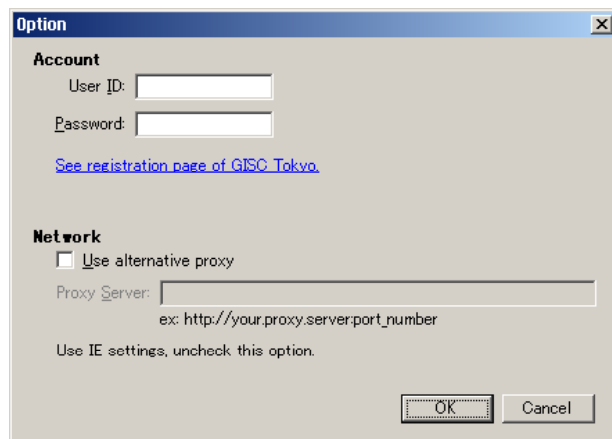
Delete data files / Download setting / Option on Tools menu

- Delete data files
 - Delete old data files in download folders manually.
- Download setting
 - Create / Modify data download settings.
- Option
 - Modify your account, network settings.



“Option” Dialog

- Account
 - If you need to download restricted data, enter your User ID/Password.
- Network
 - Subscription Manager uses IE’s proxy setting by default. If you want to other setting, enter proxy server name.



Option

Account

User ID:

Password:

[See registration page of GISC Tokyo.](#)

Network

Use alternative proxy

Proxy Server:

ex: http://your.proxy.server:port_number

Use IE settings, uncheck this option.

OK Cancel



“Download settings” Dialog

- Enable
 - When you need to enable this download setting, check this option.
- Label
 - Name of this download setting.
- Source
 - URL of download list. You can get this URL from the dialogue of this software. See next page.
- Save to
 - Saved folder of this download setting.



How to get “Source”



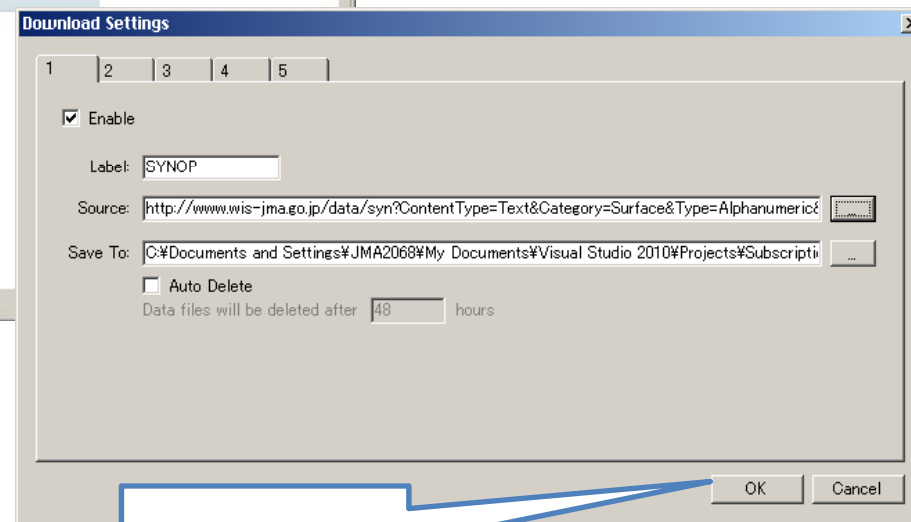
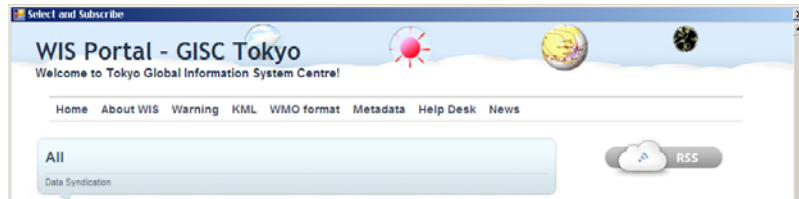
The 'Download Settings' dialog box shows a 'Source' field with a URL: `http://www.wis-jma.go.jp/data/syn?ContentType=Text&Category=Surface&Type=Alphanumeric`. A red circle highlights the end of the URL, and a blue callout box points to it with the text 'Click here to open dialogue'. An orange arrow points from this circle to the 'Select and Subscribe' dialog box.

The 'Select and Subscribe' dialog box is titled 'WIS Portal - GISC Tokyo' and 'Welcome to Tokyo Global Information System Centre!'. It has a 'Next' button. A blue callout box points to this button with the text 'Click “Next”'. The dialog also includes an 'Access' section with radio buttons for 'All', 'Closed', and 'Open', and an 'RSS' button.

Copyright © 2011 WIS Portal – GISC Tokyo ([Japan Meteorological Agency](#)). [Legal Notice](#)



How to get “Source”

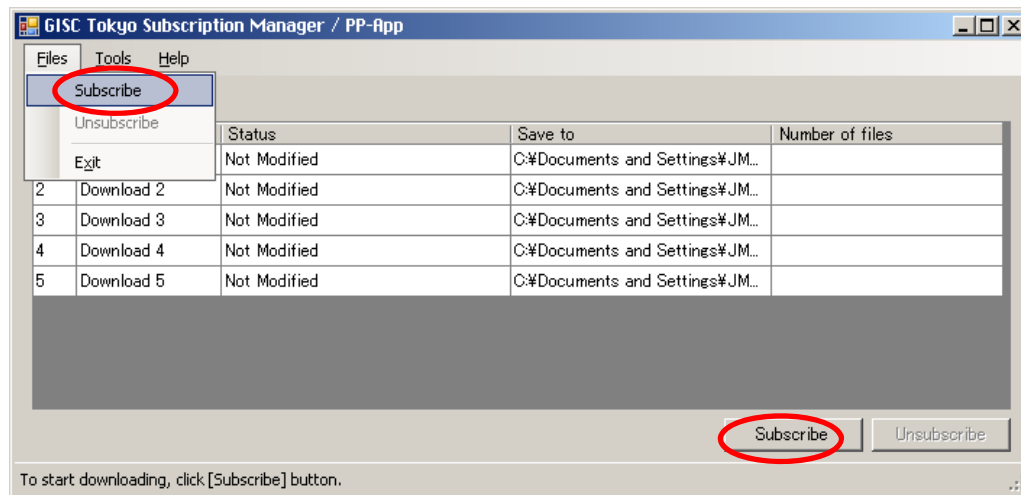


Click “OK”



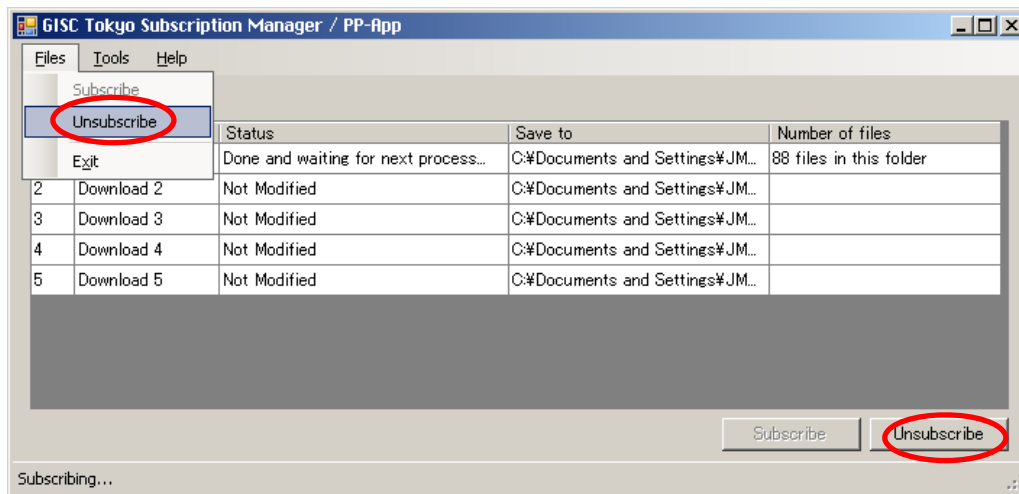
Start subscribe

- To start subscribe, Execute “Subscribe” from Files menu or click “Subscribe” button.



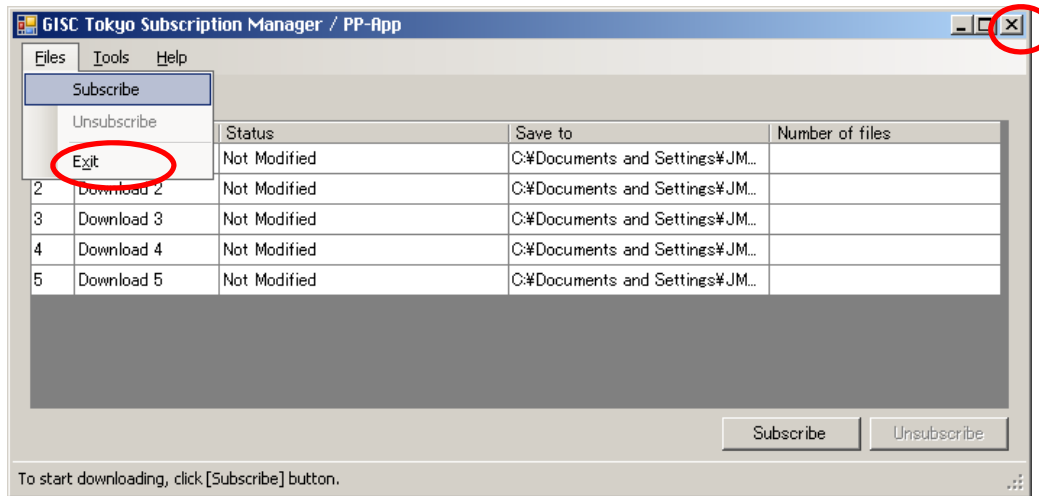
Stop Subscribe

- To stop subscribe, Execute “Unsubscribe” from Files menu or click “Unsubscribe” button on main window.



Exit Subscription Manager

- To exit this program, Execute “Exit” from Files menu or closed button of main window.



Automatic subscription start

- Create shortcut of this program
- Open property of this shortcut
- Modify target (add /a or /A)
- It is convenient with using Windows startup folder.

